

Northern Sonoma County's Favorite Paper

FREE

Cloverdale Connect

Bringing our community together since 2020

June 2025



Editor's Note

When I was as a kid, summer officially began Memorial Day weekend (never mind when the Summer Solstice occurred) when our family would pile into the station wagon and drive from Fairfax to our summer cabin in Healdsburg every weekend until Labor Day. Summer days would be spent swimming in the river, eating popsicles and reading "Archie and Jughead" comic books and chewing Bazooka.

In the evening the family would gather around the kitchen table and play Monopoly or canasta and drink Hawaiian punch. There was no television in the cabin and no telephone. As night fell, my brother and I would go outside to the sleeping porch and fall asleep with the sound of the train rumbling through town in the distance. What are your summer memories? I hope they are as happy as mine.

I'll see you around town!

Dana



Kate Barrett **BOLTS** to the mailbox for her copy of *Cloverdale Connect* every month!



Front Page Photo

Contest Winner

Dave Delgado

Wins a Gift Card from
West Coast Sourdough

FRIDAY NIGHT LIVE at the plaza

JUNE LINEUP:

- June 6 • **David Luning Band** Americana
- June 13 • **Banda Pacifica** Banda, Regional Mexican
- June 20 • **Yarn** Alt-Country, Rock and Roll
- June 27 • **Diggin' Dirt** Late-60s Inspired Funk

Brought to you by:
CLOVERDALE ARTS ALLIANCE
www.cloverdaleartsalliance.org

DAHLIA & SAGE

COMMUNITY MARKET
DOWNTOWN CLOVERDALE @115 EAST 2ND STREET 707-669-2320

🌞 June at Dahlia & Sage 🌞

We're excited to welcome Sean Geske to our team this summer! Sean is a dedicated member of the Cloverdale community and was recently honored as Classified Employee of the Year at Cloverdale High School. Known for his work ethic, kindness, and positive energy, he's already making a flavorful impact in our kitchen—just in time to fire up the smoker. Get ready for smoked, made-from-scratch specials you won't want to miss!

This month's Round-Up supports FFA—join us in helping the next generation of local farmers by rounding up at the register. And with Father's Day around the corner, we're raising a toast to all the dads, jokesters, grillers, fixers (and non-fixers too!). Celebrate with something smoky from the kitchen and a great pick from our craft beer selection. See you at the Sage!

COME SAY ALOHA TO SEAN

PERMIT #33335
HAYWARD CA
PAID
US POSTAGE
PSRRT STD

*****ECRWSSEDDM*****
POSTAL CUSTOMER

OLD CAZ
BUDWEISER
PILSENER
LAGER
IPA

Look Inside! CHS Grads Photo Album, Father's Day Photo Album, La Familia Sana grant, Pride Week celebrations and much more!

Cloverdale Connect Inc PO Box 404 Cloverdale CA 95425



**Sponsored by
Dahlia & Sage Community Market**

John and Ana-Luisa have been pillars of support in our community, combining their exceptional knowledge of psychology with a passion for helping others. Their bilingual skills have made them invaluable in fostering communication and understanding with families, ensuring that every child has access to the support they need to thrive.

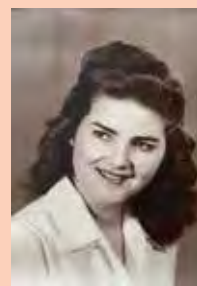


broadened his perspectives, allowing him to bring a unique, global outlook to his work. Whether working with a student struggling with anxiety or providing guidance to a staff member navigating a difficult situation, John has always approached each case with a deep understanding and compassion.



apy has been invaluable at times, and she often has just the right suggestion to help a student who is struggling.

As they step into retirement, John and Ana-Luisa leave behind a legacy that is impossible to measure in words alone. Their dedication to the students they've served, their commitment to their professional development, and their ability to make even the most challenging days a little brighter will always be remembered. We wish them both the very best in this new chapter of their lives. They've earned it! Thank you, John and Ana-Luisa, for everything. You will be greatly missed.



Her four children, nine grandchildren, and thirteen great-grandchildren, along with other family and friends, gathered in May to celebrate the 100th birthday of Jacqueline Jones Carlson – mother, grandmother, great-grandmother, wife, aunt, cousin, sister, dear friend! Cheers to this wonderful role model, generosity, and wisdom.

Brought to you by:
CLOVERDALE ARTS ALLIANCE

June 6 • **David Luning Band** Americana
June 13 • **Banda Pacifica** Banda, Regional Mexican
June 20 • **Yarn** Alt-Country, Rock and Roll
June 27 • **Diggin' Dirt** Late-60s Inspired Funk **Opener: Burrows & Dilbeck**
July 4 • **No FNL – Happy 4th of July!**
July 11 • **The Great North Special** Psych-Rock
July 18 • **Roy Rogers & the Delta Rhythm Kings** Slide Guitar Blues
July 25 • **Moonalice** Psychedelic Soul
August 1 • **Tommy Castro & the Painkillers** Soul-Blues Rocker
August 8 • **High Step Society** Electro-Swing
August 15 • **Surfer Girl** West Coast Surf Reggae **Opener: Beach Fly**
August 22 • **Joe Samba** Island Inspired Reggae/Rock
August 29 • **La Misa Negra** Heavyweight Cumbia & High Energy Afro-Latin

Downtown Cloverdale
Street Fair 6 pm + Live Music 7-9:30 pm



*Ruby Ann McNulty, mother, sister, daughter,
granddaughter, cousin, aunt and friend.*

The truth is that a legend is someone who leaves behind an unforgettable impression on others. Ruby was indeed a legend. She was a rugged mountain woman, who loved pioneering homes. She thrived on contending with the elements..the inherent adventure of improvisation and innovation with minimal resources. Content when striving to improve any structure, she always had projects in progress.

Ruby was a proud mother of two children, Forrest and Drew, both born and raised in Colorado. She was a known and appreciated member of the mountain community where she built two homes and spent over 20 years. In 2020, she returned to Sonoma County where she made her mark on the Cloverdale community. Ruby brought a smile and unique perspective to every encounter. She will be missed, but never forgotten. Ruby's parents are Ken and Jan Screechfield.

On Sunday, June 29, we will get together to share stories and lunch to celebrate Ruby's life. Please come to the Warm Springs Recreation Area, Site 2, Poker Flat, which is across the street from the Lake Sonoma Visitor's Center. There are several covered picnic areas there and Poker Flat is located in the southern section of the area. Let's start at 11:00 am. Please bring your own chair. If you'd like to bring a dish to share, text Jan at 801-803-2164.

DEADLINE for ad space reservations, artwork, and content 3rd Friday of every month. 5pm

Cloverdale Connect Inc. 6750 published monthly, distributed via direct mail, and at participating merchants
Editor, Publisher, Advertising: Dana Johnson • **Graphic Designer, Comptroller:** Vickie Norris
707.322.3403 • info@cloverdaleconnect.com • adsales@cloverdaleconnect.com
production@cloverdaleconnect.com • billing@cloverdaleconnect.com • CloverdaleConnect.com



PET of the MONTH



Lola
 Owners: **Bob and Misty Price**


This is Lola eating peanut butter from a spoon.

Send your pet photos for PET of the MONTH to:
info@cloverdaleconnect.com

Prizes courtesy of DogGonit and Cloverdale Connect

Whisker Talk

Brigid Wasson



What two words instill dread in many people and dogs? Nail trimming!

Struggling, screaming, biting ... why do some dogs have such a strong reaction to a simple procedure? Most folks assume it's because the dog has been "quicked," meaning the nail was cut too far, causing bleeding. The real reason for the behavior may be a surprise: you have trained them to do so!

"Pressure and release" is a training method that I use to help dogs accept nail trimming. Pick up the paw, the dog struggles. Hold the paw till they relax, then release it and praise. This teaches the dog that he has some control over the situation, relieving fear and anxiety. The way to get a break is to relax. Most dogs learn quickly and calm down within minutes.

The problem arises when owners "try" to trim nails at home. Pick up the paw, the dog yanks it away. Repeat, and the behavior escalates to struggling, biting, etc. until the paw is free. The dog learns that the way to get a break is to fight.

If nail trimming is a problem, just take your dog to the groomer or vet. Don't make it worse by "trying."

See my video on pressure and release nail trimming at FirstStreetPets.com.

★ 4TH ANNUAL PARADE AND DOWNTOWN CELEBRATION ★



SWEET LAND OF LIBERTY

CLOVERDALE·USA

CELEBRATING 4TH OF JULY

EST. 2022

Enjoy Live music, Food & Drinks, Old Fashioned Games

THE PARADE BEGINS @ 10:00AM

DOWNTOWN CELEBRATION BEGINS @ 11:00AM

Live Band WONDERBREAD 5 FROM 11:00-1:00PM

FRIDAY July 4TH 2025





Thinking of a move? Put your trust in us.

CALL TEDI SPAIN & MARIA KENNEY
 707.292.3060 | 707.696.2258
 DRE# 01302532 | DRE# 01223041



ROLLING OUT THE REBATES

Some "tire-rrific" upcoming deals!




While there is still some unknown with tariffs – save now with tire rebates. Up to \$200 rebates available on select manufacturers!




Tate's Tire Pros & Auto Service Cloverdale Automotive & Tires
 474 S. Cloverdale Blvd. 210 S. Cloverdale Blvd.
 (707)894-2492 (707)894-1072

LIFE NOTICES

Obituaries • Birthdays • Weddings • Retirements
Anniversaries • Birth Announcements

\$1 per word + photo in print edition and online
Submit to info@cloverdaleconnect.com

WORK OUT. GET \$100!

account credit after 10 visits
 offer valid thru June 30, 2025



you're always cool at

PARKPOINT



PARKPOINTHEALTHCLUB.COM

Cloverdale Church Guide

Cloverdale Seventh-Day Adventist Church
1085 S. Cloverdale Blvd.
Cloverdale, CA 95425



**Good Shepherd
Episcopal Church**
Open, Affirming, and Welcoming
Sunday Services at 10 AM
Taize Meditation Hour Tuesdays – 9:30 AM
122 North Main Street, Cloverdale
707-891-6015 / goodshepherdclloverdale.org





Grace Lutheran Church
890 N. Cloverdale Blvd. Cloverdale, CA
www.GraceCloverdale.org
Join us for worship 10:00 am in person
or by web - Facebook LIVE
"Grace Lutheran Church Cloverdale CA"

Jehovah's Witnesses
27100 Dutcher Creek Rd.
Cloverdale, CA 95425
Phone: 707.894.4490

Living Water Church
450 S. Franklin St.
Cloverdale, CA 95425
707.894.3274

Oat Valley Baptist Church
31000 Cooley Lane
Cloverdale, CA 95425
707.894.2998



Join us for our Sunday service at 10am.
All are welcome!
553 W. Second Street, Cloverdale
Across from City Park
For more information email us at
info.parksideclloverdale@gmail.com

St. Peter's Catholic Church
491 S. Franklin St.
Cloverdale, CA 95425
707-894-2535

The Church of Jesus Christ of Latter Day Saints
1011 S. Cloverdale Blvd.
Cloverdale, CA 95425
707.280.9433



- We are a church that tries to follow the example and teachings of Jesus through kindness and compassion
- We welcome all of our neighbors with an open mind
- Our message and music give us hope and lead us to a closer spiritual relationship with God

UNITED CHURCH OF CLOVERDALE
An open and affirming congregation of the United Church of Christ
439 N. Cloverdale Blvd., Cloverdale 707-894-2039 www.ucclloverdale.org
Sunday Worship, Third Sunday of the Month only, 10am (in person or via Zoom)
YouTube [@unitedchurchofclloverdale1906](https://www.youtube.com/@unitedchurchofclloverdale1906)

Be Peace Nora Archambeau, M.A.

*"If we want Peace, we have to be Peace.
Peace is a practice not a hope." Thich Naht Hanh,
Vietnamese monk and peace activist (1926-2022)*

P ~ **People** are our greatest source of strength and, also challenge. When the underbelly of humanity shows itself, both in the world and within community, challenging oneself to not get caught with long-term anger, retaliation, nor bitterness are quite useful life tools.

E ~ **Energy** put in the right direction helps to strengthen resilience. Taking the emotional charge out of situations also greatly helps ease delicate communications.

A ~ **Acceptance** of "what is" rather than "what we push for" aids in cellular transmutation.

C ~ **Calmness** has helped keep me grounded, sane, and cool-headed most days (I come from Irish, French, and even a "salsa cup" of Mexican heritage—a spicy combo!)

E ~ **Equanimity** is the foundation of my own spiritual practice, which is ever-evolving and ever-loving.

The stronger one becomes in their resoluteness to maintain peace, both within and without, the more quietly fierce one must be to weather the storms. Holding a mirror to oneself is a great exercise to notice, reflect, and be honest with oneself. What is true and real? What is untrue and false? It is uncanny when lies occur. When they are spewed, they land with a thud and poison the instigator, not the receiver.

And, when all else fails to cultivate Peace, try a few of the following ideas: **a.** breathe, deeply, and repeatedly; **b.** journal all feelings and what the ideal outcome might look like; **c.** Affirm: "I can challenge self-defeating thoughts." (Tiffany Roe, Feel, Deal, Heal Affirmations, card deck, 2025); **d.** respond vs. react; **e.** refocus mental thoughts; **f.** shake it out with your head, hips, or body; **g.** yell it out in the car, in a pillow, or underwater; **h.** drink Yogi Tea Honey Lavender Stress Relief (Dahlia & Sage); **i.** meditate, meditate, meditate.

Connect with C.H.S. Cheyenne Schriener

Last month of school - Your Cloverdale Eagles are in the coming stretch of community service, finals, and playoffs. CHS's 30th annual Community Unity Day was held on May 9th, where all students were divided into randomized groups to give back to the Cloverdale community while making connections with new students on campus. The middle school received a fresh paint job on its bleachers and dugouts, a set of garden planters pre-filled with mulch, and a revitalized concrete map. Smaller groups deep-cleaned the drama stage, spread wood chips at city park, cleaned the fire stations alongside professionals, and spent time with seniors at Vine Ridge Living. Students met at city park where lunch was served by the Lions Club, student-band "Los Magos de California" played through the afternoon, and a snow-cone truck was brought in to end the day. Thank you to all businesses, individuals, and locations who aided students in their efforts to support all establishments!

The Track & Field team has 14 official qualifiers for their sectional meet (NCS Class A) where finalists in their events will compete for the chance to move on to the Meet of Champions. (May 16th) **Alexis Granillo Carpizo** has broken the school record for discus at their CMC meet, landing 126 ft and 9in and breaking the previous holder, **Dylan Lyons**, 124 ft and 5in throw in 2022. Congratulations Alexis! The softball team has advanced to the playoffs, where they will compete in the higher division (D3) playoffs, exceeding their current D5 ranking in the league. They have a winning 12-2 record in the league and a 20-2 record overall. (May 16th) Good Luck, Lady Eagles!

The Senior trip will be held at Santa Cruz Beach Boardwalk, where seniors will enjoy an afternoon of fun with ride passes and a catered lunch. Their gift contribution as a graduating class will be featured on both the parking lot and football fields with a fence design reading "Go Eagles." Drive past the High School to see the Class of 2025's final mark on campus. Portfolio Night was held in May, where students presented a slideshow collection of work and growth to an audience of staff and parents. Congratulations to the 11 students who received honors for their public speaking: **Cesar Ahumada, Christopher Botello, Edgar Flores, Yulissa Garcia Macias, Logan Glasson, Grason Guest, Pamela Lopez, Guadalupe Nopanocen, Izabella Sanchez, Hana Spingler, and Kaydence Taylor.**

From the writer: This is my final column as Cloverdale Connect's CHS Intern! Thank you for letting me be your voice of the student body- it has been my pleasure and joy to be your columnist!

Are You a Cloverdale Connect Champion?
Go to cloverdaleconnect.com, click **Champion!**

Thank you to the following readers who are now **Cloverdale Connect Champions!** Please see our expanded list of Champions below as of 5/23/25.

- Allen Roberts

Audrey Brush

C. D. Grant

Carolyn Adkins

Cecily G. Henry

Deborah Hall

Debra Jack

Deborah Hacker

Denis Thoms

Ellen Boulanger

Frances Giacalone

Frances Ramage

Gail Collins

Gaudelia D. Newhart

George Artemoff

Gina Haehl

Jeanine Thorpe

Joy Camilli

Joyce Sartori

June Drake

Krista Rector

Laurie Kneeland

Lawrence Lossing

Linda Elliott

Lucille Ogden

Lynn Caruso

M.R. Wallace

Maria Erickson

Mary Jo Winter

Melanie Hall

Michael Olson

Michele Armanino

Mike Barnett

Nancy Lloyd

Carolyn Ramos

Ray & Ann Smith
- Millie & Phil Thomas

Neva Godman

Robert Redner

Shelli Byers

Susan Lile

Susan & Phil Brooks

Thana Brunges

Valerie Chestovich

William Wagy

Al & Melonie Delsid

Ann & Jack Mackenzie

Bob & Jeanne Cox

Dan Henkle & Steve Kawa

David & Beverly McChesney

David Karp & John Postma

Deborah & Patrick Nurisso

Earle & Susie Cummings

Elaine & Scott Carlson

Francoise & Burt Lang

Gene & Carolyn Marcinkowski

Gene & Polly Lile

Karma Dog Construction

Kathy Herman & Gary Giovannoni

Lewis Nashner & Ann Flores

Pat & Cindi Buell

Rich & Michele Stratton

Robert Scott & Tim McDonald

Scott & Rachel Allred

Sharon & Thomas Koch

Sheila & Kevin Kostoff

Shelley & Sam Witten

Susan & Jason Connolly Foote

Tammy Azcarate & John Pearson

Virginia & Dan Greenwald

William & Susan Walters

Paul & Rebecca Van Lith

Melissa & Bill Cox

SUPER CHAMPIONS!

- Debbi & Frank Davis

Dave & Candace Delgardo

Joseph Wiedman

Kiwanis Club

Mark Thayer

Marne Dupere

Nancy Dalwin

Richard Price

Stephen & Dianne Oliver

Wyatt Shook

Paul Cowden & Chuck Levine

Become A Cloverdale Connect Champion

Every month, Cloverdale Connect publishes and distributes almost 7,000 copies of the paper, which equals over 21,000 readers, calculated by industry standards. The papers are delivered via USPS direct mail, and also at many “drop” locations, at no charge to our readers. Over the last four years, our printing and postage costs have gone up and up and up, and yet we still provide the paper free to our readers.

We are looking for readers who would like to become Cloverdale Connect Champions with a \$50 annual gift. (Please note: this is not a tax-deductible expense as we are not a non-profit organization). Contact us at info@cloverdaleconnect.com to support local community news and information.

Bella Moda

Hair Salon and Spa



CALL TO BOOK

707-894-5546



FREE Lash and Brow Tint

with Deep Pore Cleansing

Facial with Juanita



FREE Manicure with

Pedicure with

Meliza or Mikayla

coupons expire 6/30/25

mention ad for discount

131 N MAIN ST. | BELLAMODAHAIRSalon.NET

Building The Capacity Of Mental Health Professionals In North County

As a central connector in northern Sonoma County, the Healthcare Foundation plays a vital role in bringing together community partners, providers, and residents to strengthen access to care and promote well-being. The Foundation is committed to leading the conversation around mental health, ensuring that critical information and resources are shared widely across the region. By spotlighting local services, support networks, and culturally responsive care, the Healthcare Foundation empowers individuals and families to seek the help they need—fostering a healthier, more connected community for all.

Beginning last May, the Foundation, in collaboration with local providers and media partners, is sharing timely mental health information and resources to support community awareness and access to care.

Healthcare Foundation Northern Sonoma County

What kind of help or services do you offer, and who can use them?

Our Mental Health Talent Pipeline Program provides full scholarships for bilingual/bicultural students working toward their master's in counseling degree with USF. Our goal and demonstrated success of the program is to increase the number of bilingual/bicultural behavioral health providers in Sonoma County.

What is a common myth about mental health that you wish more people understood?

Healthcare is not cut off at the neck. In other words, our physical health and mental health are not separate entities. We must give as much attention and care to our mental health as we do to the rest of our bodies to live long and healthy lives.

What is one simple tip to help people take care of their mental health?

Limit your screen time and take more walks. Bilateral movement such as taking an afternoon stroll around your neighborhood or office has been proven to reduce anxiety and depression.





LIMITED TIME OFFER:

BUY \$30,

GET \$5 GIFT CARD

TREAT YOURSELF TO THE BEST DELI

IN TOWN!

West Coast Sourdough - Cloverdale

421 S. Cloverdale Blvd

Cloverdale, Ca

707-894-6720

WWW.WCSOURDOUGH.COM/CLOVERDALE

Attention Northern Sonoma County Businesses!

Our next issue, July 2025, is **Cloverdale Connect's** 5th Anniversary

To celebrate we will feature the **Summer Coupon Collection**

Take advantage of these specially priced 5" w x 3" h ads - available **ONLY** in the July 2025 special section.

For details: adsales@cloverdaleconnect.com

Don't miss this affordable opportunity to promote your local business. **Deadline is Friday June 20th**



Elissa Morrash

Realtor/DRE 01872845
Mobile: 707.694.8821
Office: 707.669-2444
LoveLivingInCloverdale.com

129 N. Cloverdale Blvd #2,
Cloverdale CA 95425



W
REAL ESTATE

Cloverdale, CA



**RED DOOR
— REMEDIES —**

Cannabis Dispensary

Monday-Saturday 11am-7pm
Sunday 11am-5pm
1215 S. Cloverdale Blvd.
www.RedDoorRemedies.com
707-894-6054
LIC # C10-0000280-LIC

Cloverdale Automotive and Tires Michele Armanino

Jeff and Tina Tate were high school sweethearts at Healdsburg High. Jeff, a mechanic, and Tina, a wine industry worker, had dreams of someday owning their own business. “Friends and family in Cloverdale were instrumental in helping us with our two small kids so that we could reach our goal.” says Tina. With hard work and tenacity, they set out to make this ambition come true.

On January 1, 2001, Cloverdale Automotive and Tires opened and is now located at 210 So. Cloverdale Blvd. “By April, of 2001, we were able to hire our very first technician, Nick Martinez, who is still with us today!” says Tina. “We have a huge support of locals and repeat customers due to our excellent products, skilled technicians and fine customer service.” says Tina proudly. In May of 2024, the Tates opened Tate’s Tire Pros and Auto Service at 474 So. Cloverdale Blvd. The location services tires, bearings and wiring for camp utility trailers, livestock, boat and heavy-duty trailers.

Tina explains that if your car gets a blow out, the Big Box stores usually carry one type of tire so you may not be able to match it. Cloverdale Automotive most likely will have your tire, and if they don’t, they can special order it, usually arriving by the next day.

Cloverdale Automotive and Tires is also a Triple A Top Shop winner for the last four years, competing with shops in Washington, Oregon and Utah! “Triple A comes out quarterly to check our ASE (Automotive Service Excellence) Certified technicians, ASE Certified service advisors, inspect cleanliness and study customer reviews”. Tina says. She adds that they are also Napa Gold Autocare certified.

Logan Tate, Jeff and Tina’s son, has now joined the business as an ASE Master and L1 Advance Specialist Technician. He has been awarded 2024 Napa/ASE Technician of the year for all of the United States.

Customers want a business they can trust. They want the best service, up-to-date products, precise diagnostic computer systems and astute advice for their car’s maintenance and car repairs. “The service you expect and the quality you deserve.” Cloverdale Automotive and Tire’s slogan more than meets customers’ expectations.



ALL VETERANS ARE INVITED

American Legion
Wednesdays
8:30AM FREE Morning Coffee Hour

205 W First Street
Cloverdale, CA 95425

First Annual Cloverdale Pride Week

Pride Happy Hour at The Beet Restaurant and Wine Bar

June 12, 2025, 3:00 PM – 6:00 PM
Free Admission – Special Happy Hour Pricing on Wine and Food for purchase
Location: The Beet Restaurant and Wine Bar

Reception & Film Night at the Cloverdale Performing Arts Center

A festive opening reception followed by the beloved cult classic film celebrating queer identity and resilience.
June 12, 2025, Reception with wine 6:00 PM, Priscilla Queen of the Desert Screening 7:00 PM

\$25 includes wine reception, light bites, and film
Location: Cloverdale Performing Arts Center

Pride Dance Party at The Beet Restaurant and Wine Bar

A high-energy dance party featuring a DJ spinning your favorite dance hits.
June 13, 2025, 9:30 PM until Late – Starting After Cloverdale Friday Night Live

Free Admission – Kitchen will be open late – Wine and Food for purchase

Location: The Beet Restaurant and Wine Bar

Drag Bingo Brunch presented by Cloverdale Arts Alliance

June 15, 2025, 1:00 PM – 4:00 PM
Host: Blanca Salchicha Chicharron De La Cruz
Performers: A fabulous lineup of local Drag artists

\$40 (includes 2 Bingo cards) Proceeds support the renovation of the CAA Art Gallery, additional Bingo Cards: \$10 each

Food & Drinks: Available for purchase from La Tequila’s menu
Location: La Tequila Restaurant

This event aims to foster a spirit of unity and celebration in Cloverdale, providing an entertaining and welcoming space for all. With the support of the local community, we plan to make this an annual tradition, growing each year to showcase and uplift LGBTQ+ artists and voices.

The Cloverdale Arts Alliance is working to upgrade and renovate their gallery space and all funds raised from the Drag Bingo Brunch at La Tequila will be used to finance the gallery renovations.

Cloverdale Pride Weekend is proudly sponsored by The Cloverdale Arts Alliance, The Cloverdale Performing Arts Center, The Beet Restaurant and Wine Bar, and our Premier Hostess level sponsor: Joseph Wiedman and Eric Chamberlain. Wine Sponsors: Dot Wines, Mercury Wines, Lopez Family Vineyards, and Aldina

CLOVERDALE ARTS ALLIANCE

PRESENTS in Collaboration with Cloverdale Performing Arts Center and The Beet

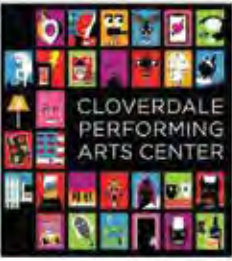

First Annual Cloverdale Pride Week

June 12th to June 15th

THURSDAY - JUNE 12:

The Beet - Pride Happy Hour
3:00 to 6:00 PM
Special happy hour pricing on wine and food.

Cloverdale Performing Arts Center
6:00 to 7:00 PM - \$25 for Film and Reception
Wine and light food served prior to the film.
7:00 PM -
The Adventures of Priscilla Queen of The Desert




FRIDAY - JUNE 13:

The Beet Restaurant and Wine Bar - Pride Dance Party
9:30 PM until Late
Join us after FNL for a special Pride Dance Party!
A live DJ will play your favorite dance hits and the kitchen will be open late!

SUNDAY - JUNE 15:

DRAG BINGO Brunch at La Tequila Restaurant | \$40 Show & 2 Bingo Cards
1:00 to 4:00 PM
Hostess: Blanca Salchicha Chicharron de la Cruz
Local Drag Performers and Bingo

Ticket includes 2 Bingo cards, a welcome glass from one of our wine sponsors and each Bingo round will feature a bottle of wine as a prize!
Food & drinks available for purchase from La Tequila



June Gardening Tips from Sonoma County Master Gardeners

Sponsored by Sanz Nursery

As the weather warms up, the evapotranspiration rate increases and affects the amount of moisture your food garden needs. ON AVERAGE, during the summer your garden needs 1 inch of water per square foot per week - about 2/3 gallon. To use water efficiently and avoid wasting water:

- o Plant dwarf varieties that require less moisture to sustain.
- o Rely on compost to feed your soil. Compost and mulch help retain soil moisture.
- o Water daily if possible
- o Water only the active root zone. For most veggies, this is 6-12 inches deep; in deep soil in an open field, this may be 18 inches deep; for many fruit trees, this is 2-3 feet deep.
- o Use a drip system, the most efficient application of water. Keep it in good repair and check regularly for leaks and plugged-up emitters.
- o 1/2 gallon emitters spaced 1 foot apart, running the system for 11 minutes per day, achieves the recommended 0.623 gallons/week.
- o Irrigate in the early morning or the cool of the evening—not mid-day when evaporation rates are at their highest.

As you finish your transition from a spring to summer garden, choose early vegetable varieties with shorter days to maturity that have high yields, and/or that are drought-tolerant or drought-resistant to efficiently use water. Note that a heat-resistant label refers to air temperature and does not mean that the variety performs well with less water.

When apple, pear, peach, and nectarine trees have formed small fruit, thin them to about 4-6 inches apart. Less fruit requires less water and fewer fruits on the tree will grow bigger.

During the spring bloom period, fertilize citrus. Typically, mature trees use up to 3 lbs. of urea or 20-30 lbs. of animal manure per year, less for smaller trees; split the application into three parts, applied during April, June and August.



RCU VISA® CREDIT CARDS

Enjoy life's rewards

Earn cash back on every purchase with an RCU Visa® credit card¹.

- ✓ Earn up to 1.5 points on every purchase to redeem for cash back, travel, and more.
- ✓ Low interest rates, plus no annual or balance transfer fees.
- ✓ Automate payments from your RCU checking account with SmartSweep².

Apply today at redwoodcu.org/credit-cards



Redwood Credit Union
75 YEARS AND GROWING

Federally insured by NCUA. ¹All rates, terms and special offers subject to change. Cash advance transactions and balance transfers are excluded from earning points. Foreign transaction fee of 1% of each transaction made in foreign currency and converted to U.S. dollars. Certain restrictions apply. ²SmartSweep is an optional payment service available for RCU credit cards. Member must meet certain eligibility criteria to enroll in SmartSweep, set the designated payment schedule, and have sufficient available funds to cover the scheduled payment. If sufficient available funds are not in the designated account, payment will not occur, and it is the Member's responsibility to ensure all required credit card payments are made. Certain restrictions may apply.

JUNE COMMUNITY CALENDAR	
Sponsored By Cloverdale Grocery Outlet	
June 6 Fri.	7-9:30pm David Luning Band, Friday Night Live*, Downtown Cloverdale
June 9-13	9-11:30am Summer Craft Camp, \$200/week, Ages 6-9 Knotty Nook, 129 Cloverdale Blvd. 12:30-3pm Summer Craft Camp, \$200/week, Ages 9-12, Knotty Nook, 129 Cloverdale Blvd.
June 10 Tues.	6:30-8pm Cloverdale Community Dance 205 First St.
June 12 Thurs.	3-6pm Pride Happy Hour, The Beet Restaurant 6pm Reception & Priscilla Queen of the Desert, CPAC
June 13 Fri.	7-9:30pm Banda Pacifica. Friday Night Live*, Downtown Cloverdale 9:30pm Pride Dance Party, The Beet Restaurant
June 14 Sat.	11am-12n Cloverdale Indivisible "No Kings" Rally, Cloverdale Plaza 5-10pm Clover Food Fest, Citrus Fairgrounds
June 15 Sun.	8-11am Cloverdale Lions Father's Day Breakfast, Cloverdale City Park 1-4pm Drag Bingo Brunch, La Tequila Presented by Cloverdale Arts Alliance
June 18-20	9-11:30am Mini-Camp, Friendship bracelets & fiber art, \$125, Ages 8-12, Knotty Nook, 129 N. Cloverdale Blvd. 12:30-3pm Mini-Camp, Friendship bracelets & fiber art, \$125, Ages 12 + up Knotty Nook, 129 N. Cloverdale Blvd.
June 20 Fri.	7-9:30pm Yarn, Friday Night Live*, Downtown Cloverdale
June 22 Sun.	1-5pm Pumpkin Planting Party, Citrus Fairgrounds
June 24 Tues.	6:30-8pm Cloverdale Community Dance 205 First St.
June 27 Fri.	7-9:30 Diggin' Dirt, Friday Night Live*, Downtown Cloverdale
June 28 Sat.	1-3pm Cloverdale Wellness, 4th Anniversary Celebration, 124 S. Cloverdale Blvd. *6pm Street Fair



Free Entry

CLOVERDALE'S FOODIE EVENT

June 14th 5-10PM

CloverdaleCitrusFair.org

Father's Day Photo Album



Armando Montenegro and Rico Mendez



Carson Hawk



Bill Van Wyk



Brad Zanzi



Cameron Dale



Todd, Greg and David Lands



Jeff Tornai

Father's Day Prize

One lucky winner will be chosen at random from submitted photos to win the Father's Day Prize

\$100 gift card from Cloverdale ACE Hardware!

ACE Hardware



Eric Leitz



Alfredo Hernandez



Fernando Ochoa



Jesus Ochoa

Father's Day Photo Album



Kevin Byrne



Danny Neustadt



Peter Daunch



Ray Carlson



Chris Welch



Justin Webb



Scott Carlson

Happy
Father's
Day



Lewis Robledo

17th Annual Asti Tour de Vine Bike Ride

Registration is now open for the 17th annual Asti Tour de Vine Bike Ride Saturday, October 11, 2025, through the beautiful fall colors of Alexander and Dry Creek Valleys in Northern Sonoma County. There are rides for all! Select the 25k, 50k, 100k or grueling 100 mile Rockpile Rumble. Rest Stops feature snacks prepared by local organizations like the Garden Club and Education Foundations. Then join your friends and fellow cyclists at the finish for a tasty Barbeque prepared by the Cloverdale Rotary Club. Registration is limited so sign up now at:
www.astitourdevine.com





Here is Rotary President Robert Redner speaking with Cloverdale Fire Chief Jason Jenkins prior to his presentation about the state of our fire safety and the mass improvements in fire abatement and detection both in Cloverdale and Sonoma County. We are better prepared thanks to Chief Jenkins and our fire services.

Parker Monroe Briggs May 8, 1992 – April 9, 2025



Parker Monroe Briggs had the best laugh! – A true messenger of “love and light”.

His life came to a tragic end much too soon.

He was born in Sacramento, California on May 8, 1992, and passed April 9, 2025, at the age of 32. He is survived by his “mum and pops”, Sally and Joe Briggs, his brother, Tanner Briggs, and his sister-in-law, Tarryn Briggs – along with his grandmas, and many other family members.

He graduated from Cardinal Newman High School in 2010 and went to Cal Poly San Luis Obispo for one year after high school. He and his older brother and best friend, Tanner, then decided to forego college, and go into the wine business. They followed in their dad's footsteps, and soon were accomplished in private label wines, as well as spirits.

Parker loved people. He loved hugs, and he loved laughing out loud. He brought joy wherever he went. His favorite words spoken most frequently were “all the love and light”. . . And that's who he was – a young man who exuded love and light wherever he went.

He had a tender heart and would go out of his way to love others with a wine bottle on their doorstep, or just a big hug. He loved God and quoted to his mum many times, “If you know how much God perfectly loves you, you would never fear.” We are so grateful to know that he is free of all earthly pain and is now held in his Father's arms.

He is, and will be, so terribly missed by all who knew him.

Hootie Hoot flew away home!

*A Celebration of Life will be held September 6, 11am,
at the Promise Center in Santa Rosa.*

Cloverdale Indivisible Vicky Groom

Cloverdale Indivisible is a pro-democracy, grassroots volunteer organization, laser-focused on keeping democracy alive and vital. There are over 2,000 Indivisible groups across the United States, with 6 groups in Sonoma County alone. Cloverdale Indivisible was founded in May 2017, and currently has 300 members. We offer opportunities to participate in postcard writing campaigns in support of progressive candidates, activities to influence our elected officials as they vote on legislation and confirmation hearings, as well as organizing participation in protest rallies.

Email communications go out to members three times a week. We welcome interested individuals to join our efforts by requesting to be added to our email list at cloverdaleindivisible@gmail.com.

Don't miss our “NO KINGS! in Cloverdale” rally on Flag Day. Bring your friends, signs, and patriotic spirit to the downtown Cloverdale Plaza, Saturday, June 14 from 11am to 12pm.

Honor Flight Brings Healing And Recognition To Veterans Gene Marcinkowski

Three veterans from Cloverdale, Cladio Calvo, myself and Sherman Macaston, along with 19 other veterans, embarked on a life changing journey to Washington DC recently, as part of the North Bay Honor Flight program. This program pays tribute to veterans at monuments dedicated to various conflicts and wars, providing a long overdue recognition of their sacrifices. Especially for many Vietnam Veterans, the trip held special significance. Unlike previous wars, Vietnam veterans often faced indifference or even hostility upon their return home. For some this lack of appreciation left deep seated feelings of anger and hurt that lingered for decades. The Honor Flight experience sought to reverse these feelings and promote healing.



The Honor Flights mission is to honor and acknowledge the sacrifices of veterans and judging by the emotional responses of the participants, it has undoubtedly achieved its goal. The organization's leadership and volunteers played a crucial role in creating a meaningful experience that will stay with us forever. This trip served as a powerful reminder that all veterans are indeed heroes deserving respect and gratitude.



Throughout our journey we met with overwhelming support and gratitude from the public at every airport, welcoming us with flags, signs, and heartfelt applause. At Washington, DC the airport fire trucks gave us a special welcome with a water arch over the airplane.

The journey cumulated in a heartwarming homecoming at Sonoma County Airport, where hundreds of well-wishers gathered to greet us. The terminal was filled with enthusiastic crowds, the road leading out of the airport along Airport Blvd. was lined with people showing their appreciation. Our emotional reunion with family and friends was a testament to the impact of the Honor Flight experience. A particularly poignant moment came when servicemen from the Coast Guard Station at Two Rock stood at attention, saluting the veterans as we departed the airport. The presence of the fire departments and the Highway Patrol also at attention added to the sense of respect and gratitude.

The outpouring of love and respect at Sonoma County Airport served as a fitting conclusion to an unforgettable journey, leaving a lasting impression on the veterans, and reinforcing the bonds between the community and its heroes. The Honor Flight program continues to make a profound impact on the lives of veterans, and its importance cannot be overstated.





Celebrating Diversity Pride Flag Raised at Cloverdale City Hall

The Pride flag was hoisted recently on the newly installed commemorative flagpole, a prominent addition to the City Hall landscape in recognition of Pride Month. The raising of the pride flag was led by Craig Johnson, a member of the City's Public Works Maintenance Team with the assistance of Mayor Todd Lands. Together, they lifted the flag, marking the beginning of Pride Month starting on Saturday and showcasing Cloverdale's recognition of the LGBTQ+ community.



The new commemorative flagpole was installed as part of Cloverdale's efforts to enhance civic pride and provide a space for commemorating cultural and social causes throughout the year. The Pride flag will remain flying throughout the month of June, reminding everyone of the importance of inclusion and respect for all individuals, regardless of their sexual orientation or gender identity. The flag was raised to ensure that the symbol of inclusivity would be prominently displayed for Pride Month.

The City of Cloverdale encourages all residents to participate in the various events and activities planned to promote understanding and acceptance within our community during Pride Month.



From Abuse to Helping Others

Lisa Diaz-McQuaid, Lead Human Trafficking Caseworker at Verity told a harrowing story of family abuse from age seven through human trafficking in her teens and addiction to drugs and alcohol at a recent Rotary meeting. Offered a modeling job in Oakland, she believed the couple who enticed her from the streets of Sonoma County and then sold her to slavery and trafficked her to New York and New Jersey.



Robert Redner and Lisa Diaz-McQuaid

Lisa's first six years were spent in a loving home with her grandparents in Cloverdale before her addicted mother gained custody and things went downhill for the next 30-plus years. An encounter with the Sonoma County

Sherriff and a course in Human Services at SRJC coupled with stays at Athena House helped her on the road to recovery and helping women (and men) who have been human trafficked. She founded Redemption House of the Bay Area in 2018 and was named a "Woman of the Year" by Congressman Mike Thompson in 2022.

For more information: www.ourverity.org;
<https://redemptionhouseofthebayarea.org/>

New Firefighters

Ten new firefighters have been hired and will be serving our communities out of the Geyserville and Cloverdale fire stations. These new firefighters will strengthen daily staffing and help the departments respond faster and more effectively to emergencies across our communities.

The fire department also welcomes a new Fire Inspector, providing a key role in keeping our homes and businesses safe through inspections, code enforcement, and fire prevention outreach.

These additions are part of the fire department's ongoing commitment to improve emergency response and public safety, made possible thanks to the passage of Measure H. The community's support has helped to build a stronger, safer Northern Sonoma County.

WINEROAD

SONOMA County, CA

CHECK OUT OUR

LOCALS ONLY SPECIAL

Wine Road members extend a special invitation to their Sonoma County neighbors to visit the many Wine Road wineries in their backyard.

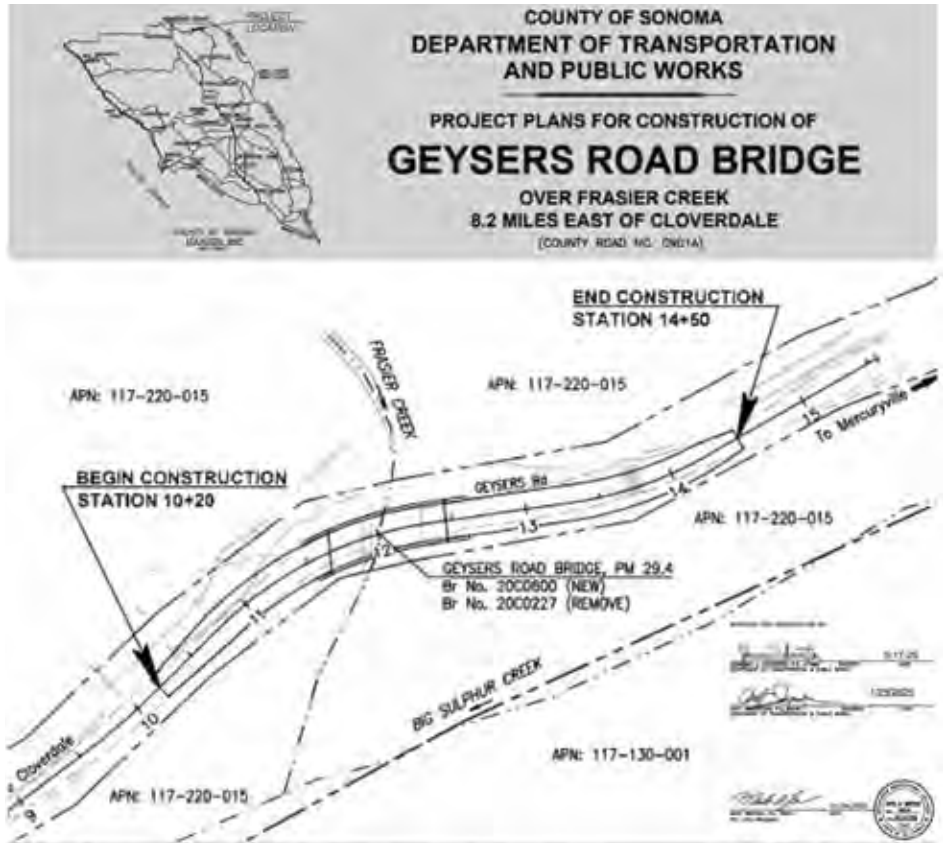
Simply show your CA driver's license with a Sonoma County address and enjoy 2 for 1 tasting every Thursday.

Scan the QR code for the complete list of wineries who are extending this Locals Offer!

Bridge Replacement Approved

The Board of Supervisors on Tuesday approved plans and specifications for the replacement of the Geysers Road bridge that spans Frasier Creek east of Cloverdale. The existing bridge was identified by Caltrans as functionally obsolete and structurally vulnerable to failure during a major earthquake. The new two-lane bridge is designed to meet current standards including improvements to roadway approaches, travel lanes and road shoulders.

"This bridge replacement project, like all County infrastructure projects, represents a collective investment in quality, safety, resiliency and access," said Supervisor James Gore, whose district includes the bridge. "After years of civil and geotechnical engineering, traffic studies, hydrology and public outreach, we can rest assured that the new Geysers Road bridge will address key concerns and provide safe, reliable access for generations to come."





CARTER
s y s t e m s

Will Carter
707.327.0327
will@cartersystems.com

Services Offered:
 ♦ Laptop/Desktop Repair
 ♦ Printer Configuration
 ♦ Home Office Set-Up
 ♦ Technical Questions
 ♦ Remote Support

COMPUTER REPAIR

Cloverdale's most trusted name in computer repair has returned!



Shouse PAINTING

707-894-5563

cell: 707-481-7937



894-LOCK
(58261)

910 Rockwell Rd
Cloverdale, CA 95425
cloverdalelockandkey@yahoo.com

- Locks Rekeyed
- Master Key Systems
- Safe Combo Changes
- Safe Locks - Repair or Replace

Jesus Chavez




PAULA S. HALL
ATTORNEY AT LAW

114 LAKE STREET • SUITE A
CLOVERDALE, CALIFORNIA 95425

PAULA@PAULAHALLATTORNEY.COM

707.856.1563





Altitude
LEAK DETECTION

Daniel O'Dor
Owner / Operator

c: 707.850.0654
danny@altitudeleakdetectionca.com



J KYLE SMITH OD
SARA HULS ABO

707.433.5020

HEALDSBURGEYECARE.COM

421 MARCH AVENUE SUITE A HEALDSBURG CA 95448

Cloverdale Senior Multipurpose Center Melanie Hall

Making time to play is important for us and our overall well-being. Play is widely recognized as being important for children, and many people prioritize it in childhood schedules, but all too often, we forget to make time for play as we get older. We may as adults feel we do not have time for it, but it is beneficial for many reasons. When we play, it stimulates a vitality that awakens the whole person, it improves memory, problem solving, creativity, imagination, and it reduces stress. Play can mean different things to different people. If you are having a tough time figuring out your type of play, try to remember what made you happiest as a child when playing. It might be a movement or social activity, it might be a solitary activity, or one done with friends or family. The important part is that this “play” is making you happy and filling your heart with joy.

If singing makes you happy, come join the Cloverdale Community Chorus, led by Dr. Mario Dell ‘Olio, that meets at the Senior Center on Wednesdays, 6:00-7:30 P.M. Maybe dancing is a playful activity for you, then join our Beginning Ballroom Dancing class which meets twice a month and is taught by Madrid Amora-Mora who is a 9-year professional dance instructor and competitor.

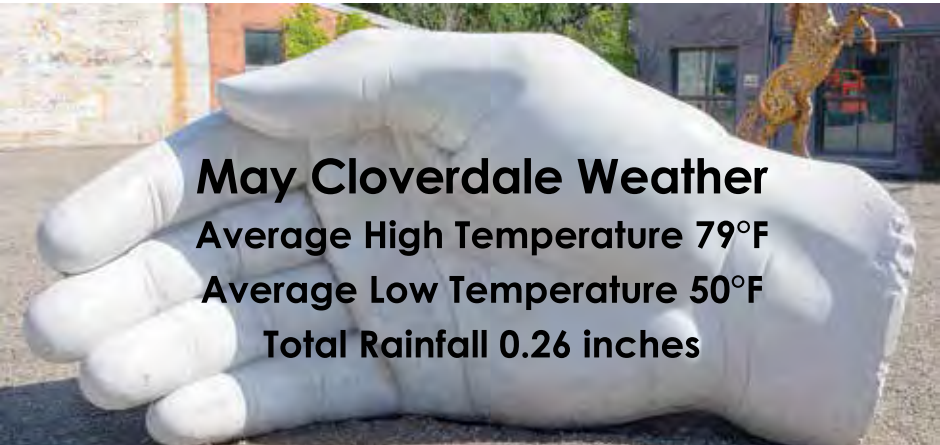
If you are interested in joining a Ukulele Play-Along Group, please call the Senior Center and let us know. The group will start June 6, 3:00-4:00 P.M.

If you or someone you know is 60+ and low-income we would like to offer a free year's membership plus one free class. This special promotion is made possible through the generous support of Sonoma County grant funding. Please come join us for “playtime” at the Senior Center.

P.S. Now is the time to support the Cloverdale Senior Multipurpose Center with your participation in our Community Endowment Program. Make the choice today to set up a one-time, weekly, or monthly contribution to the Senior Center Community Endowment Account at Redwood Credit Union.

AVAILABLE private shared office space for rent in a conveniently located shopping center in Cloverdale. Perfect for accountants, real estate agents, small business owners. Call 707-321-9601 for details

CALL FOR A TOUR!



May Cloverdale Weather

Average High Temperature 79°F

Average Low Temperature 50°F

Total Rainfall 0.26 inches

12 (as of publication date)

Rick Tang Photography

Roots of Rock MJ Girard ~ KOWSfm.com



June, the beginning of Summer, vacations and opportunities to travel near and far. Lynda and I had the opportunity to visit Rome, Italy one week before Conclave. It was an incredible experience, the culmination of a transatlantic journey that began in Florida. Visiting different cultures is an eye-opening opportunity to learn, explore and share, especially in these volatile times, an opportunity to show our true colors, that Love really is the “glue” that holds everything together.

Speaking of Love, KOWSfm.com shares the love of local, national and international hosts bringing music, conversation and entertainment directly to your smart devices. We are listener supported and are always looking for new talent right here at home. Visit us anytime for the latest schedule of available programming, and consider joining us in the promotion of “Free Speech ~ No Bull” Thanks for listening.



Pavelka's Puns

It is better to have a friend with two chins... than to have one with two faces



Send in a picture reading **Cloverdale Connect** and you will qualify for a chance to win a gift

Submit photos to:
info@cloverdaleconnect.com

Rick Tang is

Out & About

reading

Cloverdale

Connect

before swimming





THE FINISHING TOUCHES
INTERIOR DESIGN STUDIO
Helping turn your house into your home since 2003

Hunter Douglas - Shutters - Valances & Draperies - Floor plans - Color consultation
Room Makeover - Personal Shopping

Jeanne Griffiths, Owner
thefinishingtouchesids.com (707) 894-8665
jfinchids@vdon.com

CANNABIS DISPENSARY • FREE DELIVERY



CLOVERDALE
WELLNESS


124 S. CLOVERDALE BLVD., 2ND FLOOR • CLOVERDALE, CA 95425
707.894.5683 (LOVE) • CLOVERDALEWELLNESS.ORG

NORTH BAY VEHICLE REGISTRATION SERVICE
VEHICLE TRANSFERS OF ALL KINDS
"If we can't title it, then it can't be done"

- COMMERCIAL VEHICLES
- WATERCRAFT
- OUT OF STATE TITLE
- LIEN SALES
- REGISTRATION RENEWALS
- VERIFICATIONS

LICENSED & BONDED

Angela Cordova 707.577.8277
angelacordova@comcast.net



CLOVERDALE
ORTHODONTICS

Invisalign and braces for Adults & Children

Marc DeBerardinis, D.M.D.
421 S. Cloverdale Blvd. #B. Cloverdale, CA 95425
info@cloverdale-ortho.com • 707-402-0099
www.cloverdale-ortho.com

CALL TO BOOK
707-894-5546

www.bellamodahairsalon.net
131 N Main Street, Cloverdale



Full Service Salon



HAIR, FACIALS, MASSAGE, WAXING, NAILS & MORE

Fitzgerald
Decorating and Painting

Pat and Margaret Fitzgerald
Owner's

707-479-4558 cell
707-894-3243 office

422 West 1st Street
Cloverdale, CA 95425
pfitzpainting@gmail.com
Lic # 1003649



La Familia Sana Awarded Grant to Build Family Resource and Resiliency Center

The Sonoma County Board of Supervisors authorized \$1 million in grant funding to support infrastructure development at La Familia Sana in Cloverdale and the Abel De Luna Community Center in Healdsburg. These investments will strengthen family services, enhance disaster preparedness, and improve response capacity in northern Sonoma County.

Each organization will receive \$500,000 through the Supervisorial District Four Community Infrastructure Fund to transform their spaces into vital community hubs.

“This is an investment in partnership and co-creation to transform these spaces into full-scale family resource and resiliency centers,” said Supervisor James Gore, who represents Sonoma County’s Fourth District. “By investing in these community hubs, we raise up the good work that’s being done and ensure ongoing access to resources, while strengthening the County’s year-round disaster resiliency.”

La Familia Sana, a private nonprofit rooted in community trust, provides culturally informed services that meet essential needs such as housing, healthcare, and education. The funding—administered through the Community Foundation of Sonoma County—will support the creation of a permanent Family Resource and Resiliency Center, a vision shaped by La Familia Sana’s deep engagement with Cloverdale families.

“At this historical moment, when immigrant communities and rural families are facing increasing pressure, this investment allows us to stay focused on what matters: delivering care, building resilience, and creating spaces where people feel seen, safe, and supported,” said Jade Weymouth, Executive Director of La Familia Sana.

Designed to serve as a reliable hub for connection, response, and recovery, the future Center will be a lifeline in times of crisis and a year-round anchor for community wellbeing. Building on partnerships with the County of Sonoma, Alexander Valley Healthcare, On the Margins, and other local organizations, La Familia Sana continues to lead collaborative efforts to uplift and protect northern Sonoma County’s most vulnerable residents.

For more information about these community investments in resilient infrastructure, please contact Supervisor Gore’s office at (707) 565-2241 or email district4@sonoma-county.org.



THE PIE COMPANY

NOW AT CLOVERDALE
ACE HARDWARE!

\$19.99! **Run! Don't walk! The pies are finally here!!!**

PIE FLAVORS:

*APPLE PIE	*BLACKBERRY	*MIXED BERRY	*PEACH COBBLER
*APPLE COBBLER	*BLUEBERRY	*NECTARINE	*PUMPKIN
*DUTCH APPLE	*BOYSENBERRY	*NECTARINE COBBLER	*STRAWBERRY RHUBARB
*APRICOT	*BOYSENBERRY COBBLER	*PEACH	





Law Offices of
James F. DeMartini

James F. DeMartini, Esq.
David A. Douglas, Esq.
Kori Fincher

ATTORNEYS AND COUNSELORS AT LAW
"Cloverdale's Full-Service Law Firm"

- Living Trusts, Wills, Power of Attorney
- Probate & Probate Litigation
- Business & Real Estate
- Personal Injury & Accident Litigation
- Wine Production Compliance
- Food & Beverage Operations
- Employment Law & Dispute Mediation



115 West First Street • Cloverdale • 707-894-5000
cloverdalelaw.com

Let's Travel Craig Clark

I came across an article that I want to share, from [elliott.org](https://www.elliott.org), a consumer advocate, about how to buy the best luggage for your next trip. This is a worthwhile read because the airlines are becoming stricter on enforcing the rules for carry-on luggage sizes and weight restrictions and the information in this article may save you from paying luggage fees. Here's the link, <https://www.elliott.org/ultimate-consumer-guides-smart-travelers/heres-how-to-buy-the-best-luggage-for-your-next-trip/> It covers topics such as travel with luggage or travel without luggage.

Should you check your bag or carry it on? What's the best luggage to travel with. And soft or hard shell? What about the material? How to tell if the luggage is well made. A close look at wheeled luggage, and also wearable luggage. What to put on your bag tags. Name, phone number and email only. This is excellent advice for your security. Included also are details on how to pack smarter and the most popular system for tracking luggage.

I arrange many cruise vacations and sometimes things can go wrong. So, I have posted on my website, CloverdaleTravel.com, some of the worst-case scenarios that you can encounter on a cruise and tips on how to avoid them*.

Things like, if you arrive late will the ship leave without you, and can you join the cruise at the next port?

How to avoid getting sick on your cruise and what to do If you get sick. Is there a medical center onboard with doctors and a pharmacy?

What if the cruise itinerary changes or a different ship is substituted for your cruise? What to expect, and would you be owed compensation?

All these questions and more are answered with detailed information at CloverdaleTravel.com

* From thepointsguy.com



BOLT FABRIC + HOME

219 North Cloverdale Blvd.
Cloverdale, CA 95425

boltcloverdale.com

707-894-2658

WE

WHEELER ELECTRIC

Licensed Number: 1068474

(707)-708-1923

wheelerelectric20@gmail.com WheelerElectric



Katie Silva, DVM

Amy Smith, DVM

Stephanie Peterson, DVM

707.894.3951

20 Industrial Drive
Cloverdale, CA 95425



GALLO



RUN/WALK IN BEAUTIFUL GALLO VINEYARDS
ENJOY A TASTY BRUNCH • BE PART OF THE LIBRARY THAT DOLLY BUILT!

CLOVERDALEVINEYARDRACES.ORG

Blue Zones Project Approved™ Designation

On Monday, May 5, Petaluma Valley Hospital, Providence, celebrated a significant milestone by achieving the prestigious Blue Zones Project Approved™ designation. This accomplishment highlights the hospital's dedication to fostering employee well-being through evidence-based practices that promote healthier lifestyles.

The celebration featured speeches from local leaders, including Petaluma Mayor Kevin McDonnell, Petaluma Valley Hospital's Chief Administrative Officer Michelle Oxford, Blue Zones Project Petaluma Executive Director Nichole Warwick, and Ramona Faith, Chief Executive Officer of Healthy Petaluma District & Foundation. The event concluded with a vibrant ribbon cutting and social hour, featuring food from local Blue Zones-Approved restaurants. Many Providence caregivers and community members were excited to participate in the festivities.

Kevin McDonnell shared the importance of Petaluma Valley Hospital becoming Blue Zones-certified: "When considering what makes a city great and attractive for living, working and raising a family, two key metrics stand out: the quality of the health care system and the quality of the school system. These factors are direct indicators of the overall quality of life in a community."



The Blue Zones Project Approval marks a vital step for both Petaluma Valley Hospital and the City of Petaluma in their journey to becoming a Certified Blue Zones Community.

"We are immensely proud to receive the Blue Zones certification at Petaluma Valley Hospital," said Michelle Oxford. "This achievement reflects our steadfast commitment to creating an environment that naturally enhances the health, longevity and vibrancy of our community."

For more information about the Blue Zones Project and its impact on community well-being, visit **Home - Blue Zones Project Petaluma**



The CloDems ask...Whose Fault is This? Dave Delgado

I'd just parked my new '75 VW in the carport outside a rented cottage in Paradise, California when the house started to shake. Looking out the window, I was sure the carport would collapse on my new Bug. This is recent history because I can put a date on it.

Much of history, however, precedes time. Prehistory locks away answers to questions like "Why do the sides of the continents seem to fit together?" or "How did our Mayacamas come to be?"

Seismologists unlock those answers. Within the past few hundred years, they've discovered that the earth's crust rides on plates that slowly move atop the mantle, pushing and grinding against one another. This action creates fissures and faults that spread across the landscape like the vascular lines in the back of my aging right hand ~ seemingly random but connected. An earthquake on one fault can be felt along another.

Some quakes result from things humans do. For example, much of California's wealth and growth is dependent upon capturing winter water in reservoirs and spigotting it out during our summer droughts. The magnitude 5.7 earthquake rattling my Paradise carport in '75 was triggered by the weight of the water collected behind the recently constructed Oroville Dam putting immense pressure on a previously unremarkable fault. Similar seismic concerns prompted a halt in plans to build the much-needed Auburn Dam on the American River.

Seismologic gallows humor now asks: "Want to find an unknown fault? Just look for a dam built about 100 years ago." Though unknown during construction, Lake Pillsbury impounds Eel River water less than a mile from the potentially active Barlett Springs Fault. Massive Lake Oroville versus miniscule Lake Pillsbury: an apples to oranges comparison? Perhaps. It may depend upon where the next 'big one' hits.

Seismologists give us a "heads up". What we do with that information is up to us.

*The Mission of the CloDems is to Foster
an Informed and Engaged Electorate.*

Join Us on a Cloverdale Connect 2025 Cruise 7 Day California Coast



Departs San Francisco Sunday October 12, 2025

Ports of call – San Francisco; Catalina Island; Los Angeles; San Diego; Ensenada

On the beautiful Ruby Princess

Cloverdale Travel

129 N Cloverdale Blvd., Cloverdale, CA 95425

707 894-5284 • email craig@cloverdaletravel.com

Our Cloverdale Community Cares

Sponsored by  Jane & Ron Pavelka



Creative Notions
(707) 894-4110
119 1st Street,
Cloverdale, CA.

HOURS

Tuesday 10:00 AM-4:00 PM
Wednesday 10:00 AM-4:00 PM
Thursday 10:00 AM-4:00 PM
Friday 10:00 AM-4:00 PM
Saturday 10:00 AM-1:00 PM

Savings Wednesdays
Sidewalk Sale Table
(up to 50% off select items)
1st Wed. of the month 50%
off store wide! (except yarn)

DONATIONS
M-F 8:30-4 PM, 311 N. Main St.
Please get in touch with the Senior
Center to make arrangements before
you bring items to donate.

All proceeds support our local
Cloverdale Senior Multipurpose Center.

Senior Center
(707) 894-4826
311 N. Main
Cloverdale, CA.



Cloverdale Senior Center Endowment Program

Please give generously to the Community Endowment Program supporting the Cloverdale Senior Multipurpose Center (CSMC) at Redwood Credit Union. Your donation provides for future generations to enjoy the benefits and programs available at the Senior Center.

Choose a one-time, weekly, or monthly contribution to the CSMC Endowment Fund at RCU. Consider including CSMC in your estate planning as part of your will or trust.



Thank You, Cloverdale!!!

CLOVERDALE CARES FOR OUR KIDS!
SUPPORT OUR SCHOOLS
DONATE AT
www.cusdcare.org



Coming to Cloverdale Performing Arts Center

THE ADVENTURES OF
PRISCILLA
QUEEN OF THE DESERT



MOVIE NIGHT FUNDRAISER
In Partnership with The Cloverdale Arts Alliance
First Annual Cloverdale Pride Week
Thursday, June 12
Reception with wine and bites at 6:00 PM
Screening at 7:00 PM

www.CloverdalePerformingArts.com

OPEN MIC NIGHT
SATURDAY, June 21

MUSICIANS, COMEDIANS, POETS,
DANCERS, SINGERS, JUGGLERS

Doors open
at 6:30pm
Event runs 7-9pm

THIS IS A FREE EVENT
DONATIONS
ALWAYS WELCOME
To sign up to perform,
please go to:
www.CloverdalePerformingArts.com



heaven's Closet
¡La tienda de segunda mano Heaven's Closet está
aceptando tarjetas de crédito / débito!

Thrift Shop
Now Accepts
Credit/Debit Cards
439 N Cloverdale Blvd
Thrift Shop is Open Thursday and Saturdays 10am to 4pm

CHS Community Unity Day

For 30 years the high school has participated in Community Unity Day. It was started by a student, and all 400 students completed tasks to improve our community recently. They ended the day with a celebration of their hard work at the park with lunch cooked by Lions Club.

Projects included:

Spreading woodchips at all the city parks
Cleaning up Cloverdale Blvd.
Cleaning up the cemetery
Installing a garden at Washington Middle School
Planting with littles at JES
Washing Firetrucks
Painting all the baseball/softball dugouts
Painting nails at Vine Ridge Senior Living
Gardening at The Villas at Cloverdale
Projects around CHS and more.

Thank you to all of the volunteers and sponsors who make this day possible.

Cloverdale Citrus Fair

SUMMERWEEN

PUMPKIN PLANTING PARTY

JUNE 22 ➔ 1:00 - 5PM

Free educational and fun event! With activities for the whole family, such as watermelon carving, contests, raffle prizes, and the star of the event, planting your pumpkin for your jack-o-lantern in October!

Wear your best summer costume for the costume contest!



1 Citrus Fair Drive, Cloverdale, CA



June Drake
June 26, 1932-May 8, 2025



June Drake passed away peacefully on May 8, 2025, in Sebastopol, California. She was born on June 26, 1932, in San Francisco to Frank and Bertha Davis. During her teenage years, June moved with her parents and sisters to Cloverdale, where she spent most of her life. In her later years, she lived in Sebastopol with her son Dave Gunter and daughter-in-law, Peggy.

June was one of four daughters and shared her life with her sisters Barbara, Anne and Doreen. She was the mother of two sons, Dave and Steve. Her family extended to include five grandchildren and several great-grandchildren.

She remembered attending car shows with her husband Larry before his passing. For a time, June worked at a corner convenience store in Cloverdale, where she enjoyed visiting with the locals.

June appreciated a good laugh and especially enjoyed funny greeting cards. She also had a passion for online shopping - particularly for beauty products - and enjoyed the collection she had amassed over the years.

A beloved companion in her later years was her cat Smokey, whose presence brought her much joy and comfort. She was a strong supporter of PETA.

A celebration of life will be planned at a future date. June's memory will be cherished by those who knew and loved her. To plant trees in her memory, please visit the Sympathy Store.

Cloverdale's Canadian Connection
Mary Jo Winter

Did you know that Cloverdale, California, and Cloverdale, Canada, once had a "Sister City" relationship?

It all started one hot summer day in 1969. A young couple from British Columbia traveling through California were intrigued by the similarities between the two towns and decided to stop by the Chamber of Commerce office.

At the time, each town had two banks, one library, and one pool. Each had a Cloverdale Plywood, Clover Club, Cloverdale Bakery and many other businesses with the same or similar names. As a result, the sister city idea was born, with each eventually adopting the other by Proclamation.

That first Christmas, the Chamber had sheets of paper inside each business for holiday shoppers to sign. As the sheets filled with signatures, including Governor Ronald Reagan, they were taped together, resulting in a greeting card 94 feet long. The finished card was packed up, accordion-style, and shipped off to the citizens of Cloverdale, B.C.

Not to be outdone, the Canadians got signatures from everyone in town, including their Prime Minister, on eight giant clover-shaped cards. These were reduced to 2"x2" and hand-delivered to California in time for Christmas.

The story of the longest card was picked up and sent throughout the United States and Canada by the Associated Press. It was also covered by television and radio in many states.

For the next decade, a contingent from each town would visit the other annually and be treated like royalty while there.

One February, for example, a group of 38 Canadians came to town for the annual Citrus Fair and Parade. That May, 60 from our town visited the famous Cloverdale Rodeo in British Columbia.

While most of us would agree there's no place on earth quite like OUR Cloverdale, there are actually 24 other cities and towns named Cloverdale. The one in British Columbia, though, is the only one located in another country.

Every Couple Needs an Estate Plan
Paula Hall

Whether you are just starting out or have each accumulated separate property, you need an estate plan to provide for each other and ensure the survivor can remain in the home, if one dies. The "how" depends on the couple's type of commitment and the property's title.

If you are not married or in a registered domestic partnership, you are considered individuals. Estate planning for each other is critical, as the law offers no protection. The simple gift of a house could be subject to gift tax and property tax reassessment. If one party holds the property as separate property, a trust offers options to provide for each other.

Married couples have it easy. Since 2015, California and federal law treat same sex spouses the same as opposite sex spouses with respect to real property, Social Security, MediCare, IRA's, retirement plans, and taxes. Transfers of property are not subject to gift tax and are excluded from property tax reassessment.

California is a community property state. Community property is all property acquired during marriage. Your home passes to your surviving spouse by operation of law, if titled as "joint tenancy" or "community property with right of survivorship", which has the added benefit of a step up in basis to potentially reduce capital gains tax if the property is sold. Holding the home in trust avoids probate and allows flexibility when the property passes to children or family members after the death of the second spouse.

The rules for registered domestic partners (RDPs) are more complex. California recognizes RDPs as spouses, but the IRS or other federal agencies do not. Because of the differences between federal and state law, consultation with an estate planning attorney is critical. For retirement assets, consult with a benefits expert.

114 LAKE STREET • SUITE A ■ CLOVERDALE, CALIFORNIA 95425
PAULA@PAULAHALLATTORNEY.COM ■ 707.836.1563
Your family's attorney for life's important moments.



Melissa Dove McCutchan

On behalf of the McCutchan Family, it is with great sadness that we announce the early passing of Melissa Dove McCutchan. Melissa was a beloved daughter, granddaughter, sister, aunt and friend. We invite those that knew her to join us to celebrate her life at 1:00 on June 21st, 2025 at Park Side Christian Chapel, 553 W Second St. Cloverdale California.

Cloverdale Connect Scholarship
Awarded to Cheyenne Schriener



This year, Cloverdale Connect is proud to announce that our annual Cloverdale High School graduating senior scholarship has been awarded to Cheyenne Schriener. For the past few years, Cheyenne has contributed a monthly column to Cloverdale Connect and is now going on to SRJC. We have enjoyed our positive relationship with her and wish her the best.

Congratulations to Cheyenne and all the graduating seniors.

CLOVERDALE
Saw & Mower
Center

DARREN SIBERT
NINA SIBERT
Bus: (707) 894-2273
Fax: (707) 894-8485
closaw8@yahoo.com



1301 South Cloverdale Boulevard • Cloverdale, CA 95425

Transformational Counseling & Psychotherapy

Deep, Holistic, Solution-Focused, Brief
Individuals, Couples, Adults, Youth,
Family & Parenting Support

V. Grace Braun
Licensed Professional Mental Health Clinician
vgracecounseling@gmail.com
707-483-8013




Also, offering classes in meditation and spiritual practices

Call us for a **FREE** quote

LOPEZ UNLIMITED
Painting & Staining Inc.

ERNESTO LOPEZ
OWNER

707-889-0905

License # 1076189
Lopez Unlimited Painting
lop3zpainting@gmail.com
P.O. Box 2, Cloverdale 95425

Bonded and Insured

Eco-Friendly, Electric Equipment

ALL-GREEN
LANDSCAPE MAINTENANCE
707-849-3551

Serving Sonoma County Since 1994
Residential/Commercial Maintenance, Clean-ups,
Irrigation Repair, Bark/Rock Spreading



TW Flooring
Engineered Hardwood, Laminate, Vinyl Plank

Tony Wachholz
Owner

P.O. Box 819
Cloverdale, CA. 95425

707-322-5751
TWflooring819@gmail.com

CA LIC # 1049875



Tranquility Massage & Spa

Stephanie Lee Reitzell
Owner/CMP Lic #31216
707-494-3030
tranquilitymassageandspa.net
steph.reitz@icloud.com



LIBRARIES ARE FOR EVERYONE

Materials for Every Interest

- More than a million books and digital resources
- Streaming movies, TV, and music
- Digital learning tools and databases

Welcoming Spaces

- Library service 7 days a week
- Safe spaces to gather and learn
- Rich and diverse programming

Professional Development

- Adult literacy
- High school diploma
- Career and business support

Supporting Youth

- Storytimes and reading programs
- Teen volunteering and internships
- Student and teacher support

Innovation for the 21st Century

- WiFi hotspots and computers
- 24/7 book lockers
- BiblioBus stops



SONOMA COUNTY LIBRARY BIBLIOTECA
sonomalibrary.org

Dahlia and Sage Wins Snail of Approval



Dahlia and Sage Community Market has received a Snail of Approval Award. Slow Food in Sonoma County awards the Snail of Approval to local businesses who make a significant contribution to improving the food system.

By celebrating these model providers, Slow Food in Sonoma County highlights the importance of the Slow Food philosophy of good, clean and fair food for all people. Snail of Approval is an international program in partnership with Slow Food USA. Slow Food in Sonoma County is a partnership of two local chapters, Russian River and Sonoma County North.

The Creative Corner Christy Anne

“Dear Cloverdale Weather, stop showing off. We get it, you’re hot!” I remarked to my husband the other day that at 52 years of age, I have now lived in Cloverdale longer than any other city since I was born, which was in Toronto. Coming up on 18 years and despite how that warms my heart, I would be remiss if I did not admit that I still find myself cringing a bit as the summer heat starts showing up. We are blessed by air conditioning and my love for Cloverdale makes it worth it, however, like many people, the quest to stay cool and comfortable remains a work in progress.

Many of us have these delightful windows in our bathroom that aren’t the friendliest to curtains, being over the shower, but do allow in light often appreciated. That being said, summer can turn that beautiful morning light into eye scorching glare, so a simple fix can make the summer light so much more palatable.

I say simple, because a can of starch...ya know, that stuff that most millennials have probably not heard of, is the solitary and easily washed and removed later ingredient to softer light! As I delight in the Japanese rice papers that Riley Street Art Supply offers, I picked up a couple of pieces and CVS had the can of starch (in the laundry section) needed. I then grabbed a tape measure, a pair of vinyl gloves and a pair of scissors and got to it.



Measuring the pieces of glass I wished to cover, I cut the rice paper to fit each panel and put on vinyl gloves (I loathe being sticky!). I then sprayed each window to coat with the starch and placed the rice paper on top. Here is the only tricky part. Patience. Rice paper tears so easily, so I gently smoothed out the paper, wiped off the excess and done! Best part? When ready to remove, just spray with water and wipe it off, which makes it usable for renters as well - pure JOY!

Narcan Stand Installed

Few people are left untouched by the fentanyl epidemic. Recently, Micah’s Hugs, along with Jane Lewis, who lost her beautiful daughter Samantha, installed a Narcan stand in front of Napa Auto Parts in Cloverdale. This stand contains free supplies of Narcan and test strips for those who need them. Take steps to save lives in our community.



RIDE FREE

The Cloverdale Shuttle is Free For All Riders!

Hop-On, Hop-Off, Anytime.

68

The Free-Fare Program is Sponsored By:
CITY OF CLOVERDALE






AVH Wins \$4.4M State Grant to Expand Local Mental Health Services

A big win for Cloverdale! Alexander Valley Healthcare (AVH) has secured \$4.4 million in state funding to help build its long-anticipated Health and Wellness Center right in the heart of downtown! This funding, part of California's Proposition 1, will directly support expanded mental health care, increasing access to services that are much needed in our community.

"This award brings us one step closer to a longtime dream—making behavioral health care more available to everyone," said CEO, Debbie Howell. "We couldn't have done this without our generous community members whose donations helped us to meet the state's matching requirement."

The new 28,000-square-foot building will be home to all of AVH's medical, dental, and behavioral health services, currently spread across three separate sites. Mental health care expansion will include space for counseling, a Teen Clinic, and additional support for those dealing with substance use, including medication-assisted treatment. As the only provider of medical, dental and mental health care between Healdsburg and Ukiah, AVH's new facility will be a vital resource for families, youth, seniors, and others facing barriers to care.

This funding will also support partnerships with Sonoma County Health and Human Services, La Familia Sana, the Cloverdale Multi-Purpose Senior Center, and Reach for Home. The building will include a community room for group therapy, peer support groups, and health education seminars, as well as offering urgent care, pharmacy, lab services, and application assistance for Medi-Cal, Covered California, CalFresh, and prescription assistance programs. AVH will reintroduce confidential Teen Clinic Services in collaboration with local schools and will continue to focus on early intervention, comprehensive care, and inclusive outreach for populations with the greatest barriers to care.

Construction will start in January 2026.



Michael David Morrissey Cloverdale Airport Manager October 7, 1958 – April 26, 2025



Born in Oakland, California, Michael was the oldest of five brothers. He grew up in Concord, graduated from Clayton Valley High School and attended Diablo Valley College. He earned his pilot's license at age 16 and at age 18 made a cross-country solo flight. Aviation became his life-long love and passion.

Michael had an 18-year career with the California Highway Patrol, after which he held positions in fraud investigation and worked at Russian River RV Storage in Healdsburg.

He moved to Cloverdale in 2003 and loved everything about living here. He was a member of the Cloverdale Lions Club, participating in many community events. He loved the parades, the Citrus Fair and Friday Night Live. In 2016, he became the Airport Manager for the Cloverdale Municipal Airport, a position he proudly held for the remainder of his life.

Michael was friendly, outgoing and charismatic. He made friends wherever he went, and those who knew him, both personally and professionally, described him as a great guy, genuine and kind, always willing to help. Michael was an excellent cook and an amateur photographer. He and his wife took cruises to Mexico and Alaska and traveled to Hawaii often. He loved life and left us far too soon.



Michael is survived by his wife, Janice, mother, Earleen, daughter, Megan Ceja, stepson Jesse (Kristine) Atkinson and stepdaughter Jordan Atkinson. He was "Paco" to his grandchildren Jesus, Emalee, Bianca, Ruby and Ivy. He is also survived by brothers, Matt (Beth), Steve (Peggy), and John (Jeniece). He was the best dog-dad ever to his loving and devoted boys, Kash and Leo. Michael was preceded in death by his father, Ed and his youngest brother Jeff.

A Celebration of Life will be held at the Pacific Coast Air Museum (PCAM) on July 12th from 1 – 3 p.m. Donations in Michael's memory may be made to the Cloverdale Lion's Club or to PCAM for the restoration of the Butler Hangar.

Cloverdale Police Officers Promoted

Recently, several Cloverdale Police Department Officers have been promoted. Officer Uziel Ruiz has successfully completed the Cloverdale Police Department's field training program and is now serving in solo patrol. Officer Ruiz graduated from the police academy in December 2024 and has demonstrated a high level of professionalism and commitment to our community throughout his training.

In addition, Beau Gastineau and Damian Eglesfield have been promoted to the rank of Sergeant. Their leadership brings the number of patrol sergeants to three, enhancing our ability to provide effective supervision and support across all seven days of the week.



Agency and Representation

Elissa Morrash

Imagine that you are selling your property. You must decide on the price, when to close the escrow, whether to have inspections, make repairs, paint, replace the roof. You decide on timing. You make plans to move. It is a lot. Most seek the help of a licensed real estate agent for these practical decisions. But there is more. Real estate agents are not lawyers. Our role is different. We engage in a legal relationship in which we represent our client's interests in a transaction. We are authorized to act on behalf of the client in buying or selling a property. At the same time, we are negotiating on behalf of our clients. Negotiation is not a one-way street. The best chance for a successful outcome is to combine strategy, empathy, and continual learning about both parties, and to build a foundation of trust and cooperation. This is not always easy. Trust and cooperation are not words that come readily to mind in real estate. I can do this, and when I do, it is a good transaction for everyone. If you would like to know more, contact me. We can have coffee and continue this discussion.

Elissa Morrash is a licensed Realtor® DRE 01872845 with W Real Estate in Cloverdale and is an active member of the local professional real estate community. She is sometimes on social media but can be reached in person at (707) 694-8821, text or elissa.morrash@gmail.com.

An App-Etite for Online Banking

Will Carter

At thirty years old, I am conveniently placed in a timeline which has given me the benefit of witnessing firsthand the myriad ways our lives have changed due to technology. Some such changes have come to banking and how we handle money: Checks replaced by debit cards, a 'fiver' is now an amount to Venmo, and the once touted chip-cards are giving way to tap-to-pay. Just like the payment tools are changing, so is the idea of what "online banking" means with smartphone apps for banking becoming very popular. No matter where you store your money, it is likely that your institution has an app and, if you haven't yet, you might want to check it out! A major factor in my business is the convenience of mobile deposits for checks. Instead of collecting checks throughout the week and handling dozens of checks at once, Mobile Deposit allows me to use my RCU app to deposit checks straight from my smartphone! This means I spend less time wrangling checks and only need to visit an ATM or branch when I have cash to deposit. At this point, mobile deposit has saved me hundreds of trips to the local branch. Transfers and multiple accounts are usually handled with ease in banking apps, which makes managing your money easier! Between my existing personal accounts, my business accounts, and joint accounts shared with my wife, there are always balances to check and transfers to be made. Mobile banking apps are designed to make transfers between your own accounts, and to external accounts, as easy and secure as possible. If you do not yet have your banking app, give it a try! No matter where, how, or why you bank, checking out your financial institution's app is likely to give you more tools and features than their website. Many even offer enhanced support tools and after-hours support options. If you are uncertain how to get your app, or if you're not doing online banking yet, visit your local branch or call a trusted technology professional for advice and support!

City Council Report ~ Eleanore Webster

May 14th meeting: Council proclaimed May 4 to 10 as Municipal Clerks' Week. City Clerk Mike Maloney received the recognition and then presented the results of the Downtown Boulevard Survey. The results are available on line (see Agenda). A CalFire report designating fire hazard severity zones was considered. Many factors go into zone classification: terrain, fuel growth, water supply. The new maps put approximately 75 acres within Cloverdale in the Very High Severity zone and approximately 764 acres in the High Severity zone. (See Agenda for map). These maps supposedly have no impact on insurance rates, but those present didn't seem to believe that. All we can do is reduce risk, since the City can't change the map. West Yost was contracted for an update of the City Water Master Plan, at a fee not to exceed \$266,400. The last update was 2010. The intent to levy and collect annual assessments for landscaping and lighting assessment was discussed. This is a State regulated annual process. Assessments go to property owners via the property tax bill, but the City does the maintenance.

The amendment to the Municipal Code regulating vacant commercial properties was reviewed. Member Marquez wanted to enhance the amendment, but given a two-week delay, Council decided to keep the language and move forward. The SoCo Mayors/Council Members Association requested each city in the County to submit three items for potential funding and discussion at the next conference. Cloverdale's items are increased mental health support, wildfire and vegetation management, and substance abuse treatment services. Council members are working on the Potter Valley Water project. Current plans seem to imply that Cloverdale can do without water in the future. Mayor Lands is actively trying to convince parties that we do in fact still rely on water to live and maintain a viable economy. He has recently met with PG&E and Sonoma Water to discuss future water availability. Most solutions are very long term (30 to 50 years), so Council is trying to implement short term plans. One potential solution is a water purchasing agreement with Sonoma Water for the water in Lake Mendocino. The Federal Dept of Interior has expressed a desire to work for better solutions.



Vine Ridge
SENIOR LIVING AT ITS FINEST

Experience Luxury Senior Living!

Are you or a loved one looking for a place to call home in your golden years? Look no further! Vine Ridge Senior Living is your perfect destination for luxury senior living.



YOUR JOURNEY TO LUXURY SENIOR LIVING STARTS HERE!



CONGRATULATIONS

CLOVERDALE HIGH SCHOOL CLASS OF 2025



Sponsored By:
Restore Elder Care Consulting
Cloverdale Rotary • Healdsburg Optometry
Management Connections



Cesar Ahumada Jr



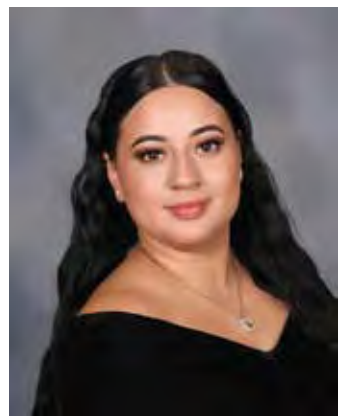
Victoria Alonso



Lexie Alvarez



Edgar Arellano Mendoza



Diana Arzate Wong



Arely Banda Plancarte



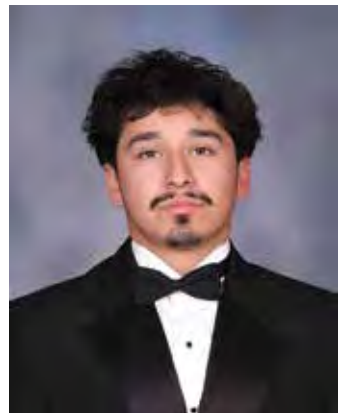
Nyomi Bashore-Ramirez



Brandee Bernal Granados



Anthony Bernardi



Christopher Botello Brambila



Gissell Bucio



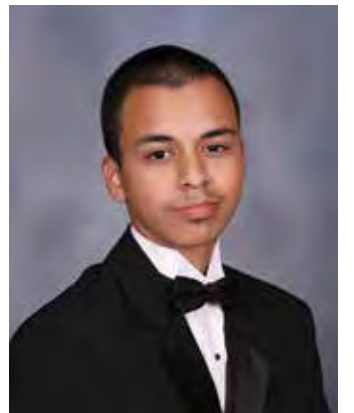
Charlotte Burchett



Gianna Camara



Luz Chavez



Daniel Cibrian Lopez



Douglas Clemmer



Colin Craig



Myles Davidson



Santino Demattei



Camryn Donahoo



Amelia Doyle



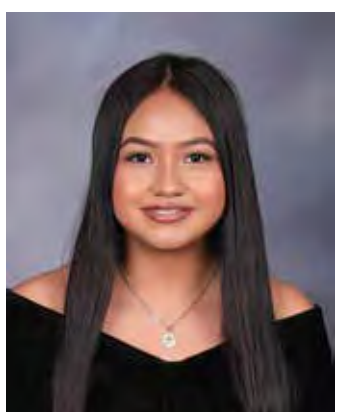
Edgar Flores Rosas



Iara Gallego Morales



Amara Galvan



Andrea Gaona Rueda



CONGRATULATIONS

CLOVERDALE HIGH SCHOOL CLASS OF 2025



Sponsored By:
Restore Elder Care Consulting
Cloverdale Rotary • Healdsburg Optometry
Management Connections



Yulissa Garcia Macias



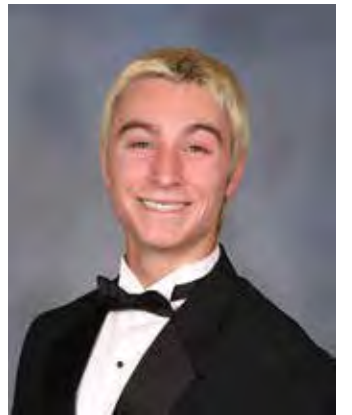
Bryan Garcia Ramirez



Daniela Garcia Zambrano



Jacqueline Gaytan



Logan Glasson



Damian Guerrero Granados



Grason Guest



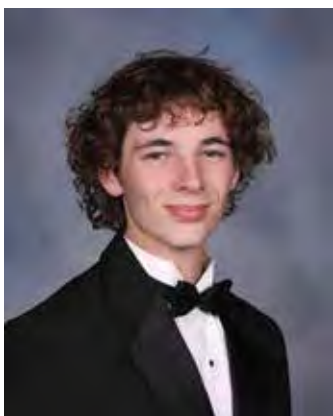
Cynthia Hernandez Garcia



Ivonne Hernandez Sanchez



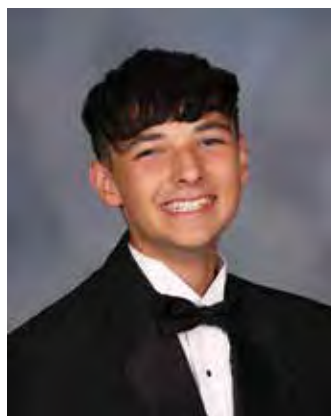
Miguel Hixson



Spencer Hooley



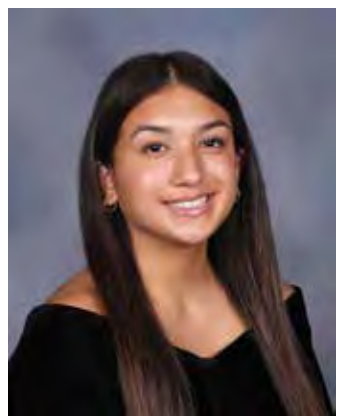
Alexandra Howell



Jordan Huls



Jasmin Jackson



Alexis Jimenez



Yareli Jimenez Alfaro



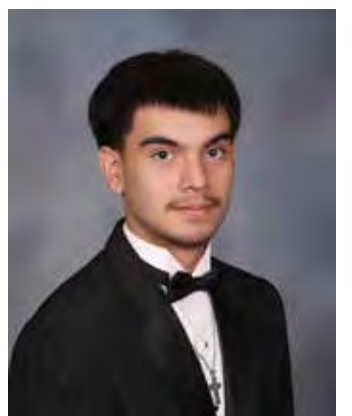
Alfredo Jimenez Jr



Zachary Lewers



Lleyton Lloyd



Esteban Lopez



Pamela Lopez



Alondra Macias Aguirre



Caden McCutchan



Jaqueline Meza



Braxton Montanye



CONGRATULATIONS

CLOVERDALE HIGH SCHOOL CLASS OF 2025



Sponsored By:
Restore Elder Care Consulting
Cloverdale Rotary • Healdsburg Optometry
Management Connections



Emma Mowery



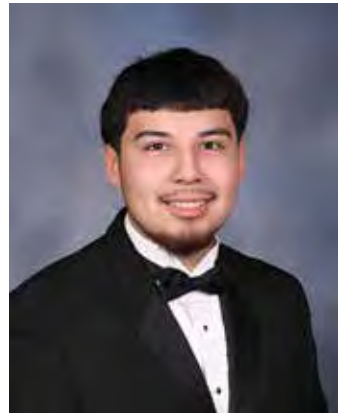
Guadalupe Nepanoceno Mora



Diego Orozco



Guillermo Orozco Silva



Evan Pesqueda



Armando Rodriguez Vazquez



Keiko Saito



Andrea Salas Mora



Izabella Sanchez



Luis Santos Pena



Cheyenne Schriener



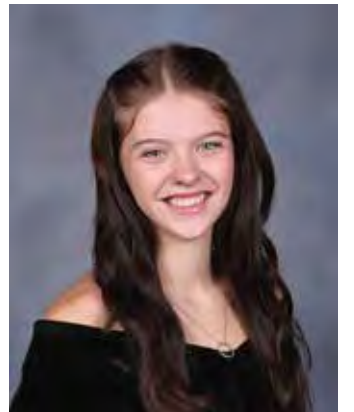
Jacob Shafer



Luke Smith



Hana Spingler



Ashlynd Stanford



Seth Steele



Madalyn Tapparo



Kaydence Taylor



Abigail Vizcaino



Class of 2025

Graduates not pictured:

Veronica Alanis Rangel
Andrea Alcazar
Audrey Alexander
Jacob Basurto
Lania Gonzalez

Carlos Hernandez-Arredondo
Marisa Hixson
David Lopez Cibrian
Matthew Mendenhall-Miranda
Ashley Meza Ramirez

Salvador Rodela
Tatiana Rodriguez Cendejas
Sitlali Santamaria Mederos
Elizabeth Seamans
Alison Stephens-Espinoza
Monsera Vazquez Rosales

The Potter Valley Project

The Potter Valley Project (PVP) is a hydroelectric and water diversion system that moves water from the Eel River into the Russian River watershed. The key benefits are water supply, hydropower, fish habitat, and recreation. If the PVP is reduced or shut down, Cloverdale could see lower Russian River flows, especially during drought years, which will impact local water supply reliability, including dramatic affects on ecosystems, agriculture, recreation, fire suppression, and drinking water.

SCOTT DAM

Forms the Lake Pillsbury Reservoir, where released water is diverted to the Russian River via the PVP. Removal will eliminate Lake Pillsbury, reducing stored water available and significantly reduce the Russian River water supply.



CAPE HORN DAM

Diverts water from the Eel river to the Russian River via the Diversion Tunnel. Removal will significantly reduce the Russian River Water Supply, as there will be no way to direct Eel River flows into the Diversion Tunnel.



DIVERSION TUNNEL

Transfers water from the Eel River to the East Fork of the Russian River into Lake Mendocino. However, the Dam removals will render the Diversion Tunnel inoperable or obsolete since without the Scott Dam, there would be no Lake Pillsbury to store and regulate water for diversion, and without the Cape Horn Dam, there is no way to direct Eel River flows into the tunnel.



COYOTE DAM

Forms Lake Mendocino which stores water for the Russian River from the Eel. Removal of the Scott and Cape Horn Dams would reduce inflows into Lake Mendocino, subsequently impacting storage levels and water availability for the Russian River.



WARM SPRINGS DAM

Forms Lake Sonoma and captures water from Dry Creek, a major tributary to the Russian River south of Healdsburg. In dry periods, controlled releases indirectly supports water management upstream.



DECOMMISSIONING AFFECT ON CLOVERDALE



Newest Rotary Member

Pictured on the left is Cloverdale Rotary Club president Robert Redner, presenting the clubs newest member, Carla Lua, with her official Rotary Club badge. Carla is the director of Vine Ridge Senior Assisted Living, a beautiful facility designed to assist seniors in all facets of retirement. Rotary is proud to have Carla as a member and we look forward to her many contributions.



