



Cloverdale Connect

Connecting Our Readers with Local Resources * Events * People

Cloverdale Connect is mailed via USPS each month to ALL Cloverdale area households, businesses and post office boxes. Total monthly distribution: 6000 copies.

www.CloverdaleConnect.com

"Where the vineyards meet the redwoods"

September 2020



You can begin to smell Fall in the air now in the early morning and notice how the light is changing. It's beautiful however we're still in a dangerous fire season. Please make sure the vegetation is cleared around your home and keep your "go bag" ready – be prepared.

This fall also will bring an important election. No matter what your political preference, please make sure you are registered to vote and then vote this November. And most of all, be kind even if you don't agree with someone.

Last month, I thanked the community for your heartwarming response to *Cloverdale Connect* and that support continues to grow. Thank you for all your positive comments. In a time when we are separated from loved ones, unable to go about our lives as we have been accustomed, it's now more important than ever to Connect.

As *Cloverdale Connect* grows in distribution numbers and in page count, our goal is to support non-profits, area service clubs and highlight all that is good and positive in our wonderful community. Thank you for being a part of this journey.

Be patient, be kind. I'll see you around town.



"Doggone it! This is a great little paper!" Casey tells Pepper.



Front Page Photo Contest Winner

Maxine Bate's photo of happy hummingbirds

Congratulations!

She wins a \$10 Gift Card from **Dahlia & Sage**

Things to see or do in Cloverdale

- Walk the Sculpture Trail
- Visit the History Center Garden
- Float the Russian River
- Visit Lake Sonoma
- Find the Fairy Doors
- Hike the Porterfield Open Space Trails
- Browse our unique shops
- Learn to play a musical instrument
- Take sewing lessons at Bolt

*Maps and brochures for the things above can be found at the Cloverdale Chamber of Commerce.



Fishing for a Real Estate Professional?

Local Knowledge and Passion with a Global Reach serving all property types throughout Sonoma County and beyond.

COMPASS

Compass is a real estate broker licensed by the State of California and abides by Equal Housing Opportunity laws. License Number 01866771. All material presented herein is intended for informational purposes only and is compiled from sources deemed reliable but has not been verified. Changes in price, condition, sale or withdrawal may be made without notice. No statement is made as to accuracy of any description. All measurements and square footage are approximate.

Jane & Ron Pavelka

Seasoned Wine Country Natives & Real Estate Professionals
707.480.1268
pavelkas.com
DRE 01381422 | 01476514



CUSTOMER
POSTAL

PRESRT STD
EGRWSS
US POSTAGE
PAID
PERMIT #16
Petaluma CA 94999

Look
Inside!

Cloverdale Connect PO Box 404, Cloverdale, CA 95425

Alexander Valley Film Society, COPE, Protect our river, Vote, Feline Rescue and more!



“The most important action we can take on behalf of democracy” former President Obama

This year, every CA voter will be sent a vote-by-mail ballot for the November 3, 2020, Consolidated General Election. Due to the COVID-19 pandemic, Gov. Newsom issued an Executive Order directing counties to mail ballots to all registered voters in advance of Election Day. YOU DO NOT NEED TO REQUEST AN OFFICIAL BALLOT. If you prefer to vote in person, visit sonomacounty.ca.gov/vote website for a list of locations open before and on election day, including their hours.

Watch for a white envelope marked OFFICIAL ELECTION MAIL and OFFICIAL VOTE BY MAIL BALLOT ENCLOSED. Inside will be your official ballot and a blue postage paid envelope to return your ballot. If you do not receive your ballot by October 19, 2020, call the Registrar of Voters Office. You have options for returning your Vote by Mail ballot, including by mail, at a ballot drop box, or at a polling place. Voters with disabilities can request a Remote Accessible Vote by Mail ballot by completing a form on the sonoma.ca.gov/vote website.

If your signature has changed, please update your signature by re-registering online at registertovote.ca.gov or contact the Registrar of Voters Office for a paper registration form.

If you are registered to vote, you will be mailed a County Voter Information Guide approximately three weeks prior to an election. The County Voter Information Guide contains information on local measure and candidates running to represent local districts. The Secretary of State publishes a Voter Information Guide that includes information on state-wide ballot propositions and candidates running for statewide or nationwide office.

Do not forget to sign and date the identification envelope so your ballot can count.

- Hand delivered Vote by Mail ballots must be returned to the Registrar of Voters office in Sonoma County no later than 8:00 PM on Election Day.
- Ballots returned by mail must be postmarked before or on Election Day and delivered to the Registrar of Voters office via USPS or a bona fide private mail delivery company no later than three days after Election Day.

To register or preregister, you must meet the following criteria:

- You are a United States citizen.
- You are a resident of California.
- You are at least 18 of age or older on or before Election Day.
- You are not currently in state or federal prison, or on state parole for the conviction of a felony.
- You have not been found mentally incompetent by a court of law.

You can pick up a paper application at the Sonoma County Registrar of Voters office, any Department of Motor Vehicles field office, and many post offices, public libraries, and government offices or register online at RegisterToVote.ca.gov.

For more detailed information, go to <https://sonomacounty.ca.gov/CRA/Registrar-of-Voters/General-Voting-Information/>

Make a plan to vote Nov 3!

Ballots will be mailed to all voters in early October.



**Law Offices of
James F. DeMartini**

James F. DeMartini, Esq.
Paula S. Hall, Esq.
ATTORNEYS AND COUNSELORS AT LAW
“Cloverdale’s Full Service Law Firm”

- Living Trusts, Wills, Power of Attorney
- Probate and Trust Administration
- Conservatorships and Guardianships
- Business and Real Estate
- Personal Injury and Accident Litigation
- Employment and Law and Dispute Mediation
- Divorce/Custody/Child Support

115 West First Street • Cloverdale • 707-894-5000
cloverdalelaw.com

CLOVERDALE CITY COUNCIL & SCHOOL DISTRICT CANDIDATES!

We will feature a Candidates Forum in the October issue of *Cloverdale Connect*.

Submit a 200 +/- word statement telling Cloverdale residents why they should vote for you in this election.

Be sure to include a 300 dpi photo.

Deadline for submissions: Friday September 25th.

ATTENTION CLOVERDALE AREA BUSINESSES!



There will be **NO** local Cloverdale phone book published this year so be sure to run your business card ad just \$60 per month.

Cloverdale Connect

“Your Community Connections”

Contact us for details:

info@cloverdaleconnect.com

Cloverdale Connect Published monthly, direct mail distribution 5813, and at participating merchants

Editor, Publisher, Advertising: Dana Johnson • **Graphic Designer, Comptroller:** Vickie Norris

707.322.3403 • info@cloverdaleconnect.com • adsales@cloverdaleconnect.com •

production@cloverdaleconnect.com • billing@cloverdaleconnect.com



Nick Pavelka – Local Videographer

Local resident Nick Pavelka is a professional videographer with a very impressive catalog and client list. You’ve probably seen some of his short videos that appear on the Cloverdale Chamber of Commerce Facebook page. One of Nick’s clients is Paul Basagoitia, who became a good friend. Paul was the top downhill and mountain bike racer on the planet. He was paralyzed in an accident during the Red Bull Rampage event 5 years ago. Nick was present at the event and captured many of Paul’s practice runs prior to the actual event plus additional footage. Paul’s accident was chronicled in a movie produced by Red Bull entitled “Any One of Us” which was purchased by HBO and is currently airing on many platforms including Amazon Prime Video. The movie was nominated for 2 Sports Emmy Awards and took home one for Editing. Nick Pavelka contributed up to 22 minutes of this 90 minute feature of his friend Paul creating a movie that would have been nearly impossible to produce without his contribution. “Any One of Us” is an emotional ride through Paul’s eyes and chronicles many that have been afflicted with spinal cord injuries. Paul is back riding and his rehabilitation has been quite successful.



Alexander Valley Film Society Launches New Media Arts Toolkit

Since 2014, the Alexander Valley Film Society has been serving thousands of adults and students in Northern Sonoma County through year-round educational and cultural programming. In 2019, they celebrated their fifth annual film festival. The Alexander Valley Film Society has screened more than 250 films, logged thousands of volunteer hours, introduced dozens of filmmakers to their patrons in Sonoma County, and has created a significant economic impact in our region.

Recently the Alexander Valley Film Society launched a new media arts toolkit for educators in Sonoma County which is the latest development of the Full Circle Cinema program, an effort to bridge the gap of media arts literacy and video skills training for students in Sonoma County.

Teachers can access the toolkit through the AVFS website. With this kit, teachers can integrate media arts education into core classes to leverage existing curricula or take advantage of standalone classes designed to enhance class projects. It also serves as a one-stop-shop of self-directed resources for media literacy and video skills training. Each of these components is ranked “introductory,” “intermediate,” and “deep dive.”

“The Full Circle Cinema toolkit for teachers is something we worked toward for years,” said Joe Dobbins, an educator and member of the AVFS Educational Committee. “By giving teachers these tools, we can help make it easier for them to incorporate this critical work into their classrooms. Plus, the online solutions we assembled have never been more important.”

AVFS’ educational efforts are generously underwritten by Creative Sonoma, the California Arts Council, Walter Gendell & Jack Fitzsimmons, Robert Scott & Tim McDonald, and numerous private donors.



114 Lake Street, Cloverdale, CA 95425
707-669-2444 • DRE #01795950



36 Foster Court

This elegant, custom built 3 bedroom, 2.5 bath home is tucked back in a quiet cul-de-sac. Through every window there are views of nature. Downstairs includes separate living room or formal dining room, family room and kitchen with breakfast bar, and eating area. Upstairs, master bedroom with generously sized en-suite bathroom, separate soaking tub and stall shower. Additional two sizable rooms, one giving access to a large walk in attic. The shaded backyard with exposed aggregate patio and large wood deck is perfect for entertaining on those warm Cloverdale evenings. Walking distance to Cloverdale’s charming downtown. \$649,000.

105 Chardonnay Court

Tucked in a quiet cul-de-sac sits this charming 3 bedroom, 2 bath single story home. There is a permitted addition off family room that can be used as formal dining, an office or sunny playroom, etc. Naturally lit by a skylight, the kitchen boasts a breakfast bar and stainless appliances. New roof 3 years ago. The private backyard is perfect for entertaining and has a large side yard, garden and BBQ area. \$549,000.

1675 Cherry Creek Road

This private family compound sanctuary boasts potential self-sufficient off-the-grid privacy on 80+ acres, with easy access to nearby Geyserville and Healdsburg! Spectacular panoramic views of the Alexander Valley, Lake Sonoma, Cobb Mountain, and Mount Saint Helena from every room in the house and from the extensive wrap-around deck. The parcel includes numerous roads and nearby fire trails for hiking, biking, horseback riding and off-road vehicles. The 2600-square foot home features 5 bedrooms and 5 bathrooms (one has a private entrance and sitting area) Downstairs contains a separate unit with kitchen, living room and bedroom and bath; and a small, separate bedroom and bathroom. Both have flagstone patios and views of Lake Sonoma. Separate outside access makes these units perfect for guest quarters, in-law suite, or vacation rentals! Also, 12 acre Zinfandel vineyard, four large accessory buildings for entertainment, exercise, music room, workshop, storage and groundskeeper’s quarters. \$3,690,000.

Cloverdale Library News

Sonoma County Library features many virtual events and tutorials on their YouTube page with story-times in three different languages, crafting at home, and science experiments you can do at home. There is also a set of Tutorials on how to access and use their online resources. To get there, try searching Sonoma County Library YouTube or type in this address: youtube.com/user/sonomalibrary. For assistance, please call 707 894-5271, 10am-3pm Mon. thru Sat. If you need to call outside of those hours, please leave a message and someone will return your call within 24 hours.

The library is now accepting returns with the book drop open on Fridays and Saturdays from 10am-5pm. Once full, the book drop will re-open the following Friday so we can quarantine items safely. For safety, returns are quarantined and may not be “checked in” for up to a week. Please note no overdue fines are charged.

Submit your FALL photograph for our Front Page Photo Contest. If your photo is chosen you will receive a **\$10 Dahlia & Sage gift card!**

Email your photos to info@cloverdaleconnect.com

Cemetery Story Update

Mary Jo Winter, the author of the history article about the cemetery monument that appeared in last month’s issue of **Cloverdale Connect**, received a phone call from 102-year old Harold Peters who lives here in Cloverdale. It seems his aunt from Iowa married Farley Abshire, Susie Abshire’s husband, and they lived together on a Geyserville ranch until both of them passed. Harold came to California when he was about one and a half. He and his family lived with Farley and his aunt until he was about seven. He said he “was totally blown away to see the article” and has always wanted to go up and find the monument, but never got around to it. Now he wishes he had.



Holiday Gift Showcase

ATTENTION LOCAL RETAILERS: Reserve your ad space NOW for the special *Cloverdale Connect* Holiday Gift Showcase featured in the November & December issues. Your 3" w x 3.25" h ad is just \$240 each for two months or \$130 for just one month. This special ad size and price is only for the **Holiday Gift Showcase** info@cloverdaleconnect.com Deadline is Friday October 30th.

Coffee With the Mayor & Friends (Virtual Meeting)

Thursday September 10th, 10-11am, Mayor Gus Wolter will recap the city council meeting of the night before and share what the city and the council have been doing during our recent Walbridge Fire.

Thursday September 24th 10-11am, Mayor Gus Wolter will recap the city council meeting of the night before and have a Questions & Answers segment. Please send your questions to info@cloverdaleseniorcenter.com (the host of these Coffee Chats) or mail them to P.O. Box 663, Cloverdale 95425 by Wednesday September 23rd 10am.

To join these meetings:

1. Navigate to <https://www.webex.com>
2. Click on the "Join" link in the top right corner
3. Enter the meeting ID numbers and press "enter"
4. Enter your name, email address and the meeting password, and press "enter"
5. Click the "Join" button and enter the meeting

Meeting ID number: 126 611 27 47

Password: 4826

To join by phone, dial 1-408-418-9388, and use access code: 126 611 2747

Mayor Gus Wolter looks forward to hearing from you and answering your questions.

THE OUTPOST
For the working men and women of Cloverdale.

"We say grace and we say ma'am if you ain't into that we don't give a damn!" ~ Hank Williams Jr

113 Broad St Cloverdale CA 95425 • 707-669-0656



Citizens Organized to Prepare for Emergencies

How to set up and maintain a COPE program in your community:

1. **Define the Scope of Your Neighborhood.** Include ten to twenty homes or segment into manageable groups. Combine homes in maintained and non-maintained areas, if appropriate.
2. **Build Your Neighborhood Leadership Team.** Enlist one Leader and recruit two to three people as Co-Leaders. They should be committed to the COPE program and capable of responding after an emergency to rapidly changing situations.
3. **Take a Survey of the Residents in Your Neighborhood.** Using a form, document resident names, contact information, special skills, special needs, physical limitations, health problems, and equipment that could be useful such as generators and chainsaws. Be prepared to help neighbors who need assistance.
4. **Record Information about Each Home.** Record location of gas, water, and electric shutoffs. Understand manual operation of garage door. Note specific fire dangers, such as wooden shingle roofs and location of flammable vegetation. Note availability of special tools for use in emergencies. Record your information on an Excel or google sheet.
5. **Identify Meeting Site and Escape Routes.** Choose a central meeting site to congregate when emergency occurs. Define alternative escape routes for evacuation based on specific situations. Designate a meeting site near home and an alternative safe site outside the neighborhood if the neighborhood is inaccessible or evacuated.
6. **Schedule and Conduct Meetings with Residents.** Introduce COPE Neighborhood Team Leader and Co-Leaders. Review results of COPE Team Survey Form. Discuss central meeting site and escape routes, team actions in the event of an emergency, and communications and transportation to medical control and evaluation centers. Distribute copies from this guide to each residence.
7. **Maintain Your Plans and Kits with Ongoing Effort.** Every time you change your clocks (every six months), conduct a COPE Neighborhood Team meeting and review and update all COPE material. Update COPE Team Survey Form for new residents in your neighborhood or changes to needs and capabilities of residents. Review planned meeting site and escape routes. Inform residents of any changes.

For more details about setting up a program be sure and see the COPE Handbook. It is available in Word so that you can start using the forms attached right away and make any changes to the document you wish.

Consider attending one of the "Virtual COPE Office Hours" and for more information on COPE in our community, contact Geoffrey Peters, COPE Community Leader for the Cloverdale/Asti area. Geoff is also on the Cope Northern Sonoma County Leadership team and is a resident of our community in the Asti area. Geoff also was instrumental in developing CERT (a medical response team) and training new CERT authorized responders for all of Sonoma County with many in the Cloverdale area. Contact Geoff at gpeters@showa-farm.com

Be Seen Around Town

Here's your opportunity to be famous! Each month we feature one local person in a photo on the front cover reading the latest issue of *Cloverdale Connect*. It could be you! Each month we draw a winning name from those who have sent us an email and arrange to take a photo of you reading the paper somewhere in our community. Running for city council? Looking for new friends? Want to promote your own business? Contact us: info@cloverdaleconnect.com

Be a Good Neighbor – Keep our
Cloverdale Community Fire-safe



We continue to face dangerous fire conditions in our Cloverdale community and there are things you can do to help lower the danger for all of us. Support your firefighters by providing a safe and defensible space.

Keep us all safe:

- Remove dead vegetation.
- Trim away branches within 10 feet of chimney.
- Remove branches hanging over your roof
- Keep rain gutters and roof clean.
- Move woodpiles 30 feet or more away from all structures.
- Propane tanks: remove all flammable materials around tank (leaves, needles) and position the tank at least 30 feet from the house or other structures.

A free chipping program to help residents create defensible space around occupied homes and reduce vegetation along access routes is being offered through Sonoma County Fire and Emergency Services. County crews will come to homes and chip for three hours for free. For more details contact fireprevention@sonoma-county.org

Be sure to address the following:

- **Roof:** A roof in poor shape will increase risk of home loss more than any other single component.
- **Vegetation:** Keep the area around your home clear of debris
- **Firewood piles:** Keep them 30 feet from any structure
- **Wooden Trellises:** Consider a trellis made of a noncombustible material.
- **Windows:** Glass can break when exposed to radiant heat or flames and can provide an entry point for flames and embers. In dual pane windows, the outer pane protects the inner pane; the inner pane heats up more slowly and uniformly, and may not break even though the outer pane does.
- **Decks:** The initial ignition point for many homes - keep it clean of debris. Don't store flammable items such as firewood or the gasoline can on a deck.

Another option is a company called All Risk Shield, represented by local resident Bobby Payne. All Risk Shield offers a wide array of services from brush removal, special vent installation to embers out, gutter guards and pump systems if the property has a water source. They can even apply Phos-Check which is what you have been seeing dropped out of airplanes to fight the Walbridge fire. Bobby and All Risk Shield work directly with Phos-Check and have a colorless, odorless, environmentally safe agent which is applied to the most vulnerable locations on one's property. It lasts 6-8 months and is best applied at the start of fire season and at the peak. Bobby is well known in our area and has been posting informative videos on social media during the Walbridge fire. He knows how important it is that people have the current updates and facts.



CLOVERDALE

CHAMBER OF COMMERCE

Thank You for your Decades of Support!
We would like to thank you for 20+ years of membership.
Thank you for your commitment to our business
community; we couldn't do it without you.

Ace Hardware	George Petersen Insurance
Alexander Valley Healthcare	Grace Lutheran Church
American Legion Post 293	Healdsburg District Hospital
Animal Hospital of Cloverdale	James DeMartini Law Offices
Calpine Corporation	Dr. Jonathan Kreger, Ukiah Podiatry
Cloverdale Napa Auto Parts	Management Connections
Cloverdale Ambulance District	MGM Brakes
Cloverdale Citrus Fair	Papa's Pizza
Cloverdale Eagle Tech Collision & Towing	Redwood Empire Sawmill
Cloverdale Pharmacy	Reuser, Inc.
Cloverdale Reveille	Rotary Club of Cloverdale
Cloverdale Senior Multipurpose Center	Southard Tire & Auto
Exchange Bank	State Farm Insurance
Fred Young Funeral Home	Thousand Trails-Russian River RV Park
Furber Development	WC Sanderson Ford
	W Real Estate



Feline Rescue

Residents of Cloverdale are dealing with a persistent and tragic homeless cat problem. The situation continues to worsen due to job loss, evictions, "no pet" policies and lack of resources to get pets spayed and neutered.

Fires and COVID-19 have exacerbated the situation, and an increasing number of cats are being abandoned and/or left to reproduce.

All volunteer Feline Rescue has partnered with the Animal Hospital of Cloverdale to launch "Spay's the Way" for qualified low income residents of Cloverdale to alter tame cats in their care. Feline Rescue will administer the program. Details and an application are available by emailing wesavecats@gmail.com. **No email? Then text 707 494 5544.** Appointments are limited, and preference will be given to female cats. There is a co-pay of \$30, and the program covers spay/neuter surgery only. Low income qualification is based on household income or participation in a qualified assistance program (e.g. food stamps, Medi-Cal, free lunch, etc.).

It is incredibly important to spay female cats. They breed as early as four months old and can have three litters a year. Unspayed offspring multiply exponentially. Spaying prevents thousands of unwanted births in four years and over a million in eight years. (Source: Animal League of America)

For more information, to volunteer or donate, please contact **FelineRescue** at wesavecats@gmail.com.



SPECIALIZING IN THE
SENIOR MARKET
SINCE 2000

MEDICARE CAN BE
CONFUSING, I CAN HELP

Medicare is overwhelming, allow me to help you make sense
of it and guide you through the process.
As an independent insurance agent, I can offer advice
on all insurance plans.

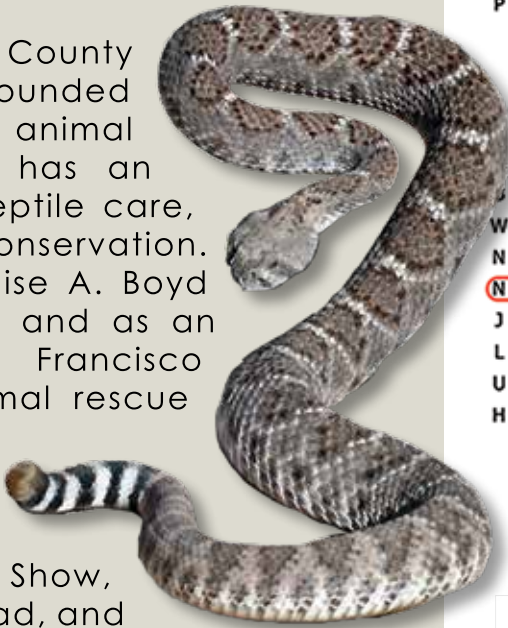
CONTACT ME TO GET STARTED
NIXONBUSINESS.COM
707 894 9882
105 N. CLOVERDALE BLVD.

FREE RATTLESNAKE REMOVAL

Rattlesnakes are one of the most misunderstood of all snakes yet they are one of nature's forms of rodent control, and they play a vital part in the balance of our environment. If you find a rattlesnake on your property, please contact Sonoma County Reptile Rescue and they will safely remove the snake. There is no charge for this service, however, donations towards the cost of travel are always appreciated. Contact Al Wolf (707) 829-8152 or email screptilerescue@comcast.net.

Al Wolf, director of Sonoma County Reptile Rescue which he founded in 1989, has been an animal lover from childhood. Al has an extensive background in reptile care, animal husbandry, and conservation. He has worked for the Louise A. Boyd Museum of Natural History and as an administrator at the San Francisco Zoo, as well as other animal rescue organizations.

Al has appeared on Mutual of Omaha's Wild Kingdom, Animal Planet, The Today Show, Britain's Animal Rescue Squad, and several other television programs.



September
Fairy Doors

131 N. East St.

Bolt Fabrics



The Creative Corner

Christy Latchford

Well as if Covid and back to school weren't enough, Mother Nature gifted us with an earlier than expected fire crisis to once again test nerves and increase anxiety. Some things are simply out of our control. However, there are some creative things we can do to be more prepared for what will continue to rear its head and help us navigate in times of stress.

Most of us by now have a pile by the door "in case" we need to evacuate which is fine, but as the season is far from over I am offering up an idea to lessen the continual visual reminder that our lives are disrupted. This idea is something that is designed to live in plain sight year round, something pleasing to the eye that hides within its walls: extra keys, copies of financial documents & official MAP of where your evacuation items are stored on your property (garage/closets/etc.).

For myself it's my elephant stool that lives next to my bed where I read; inside extra keys, copies of important info and list of "if panic arises and brain freezes, here is where it is" list. The next box down is a crate I added a lid with hinges and wheels for my mom that blends in with the style of her home. The chest at the bottom can hold multiple backpacks and food and water and has wheels so can be easily moved if needed.



Need ideas for your Go Bag list? Safetyactioncenter.pge.com and ready.gov/plan offer up free lists and of course Pinterest is filled with them!

SOLUTION TO AUGUST WORD SEARCH PUZZLE
Seen Around Town



WORD LIST:

- | | | |
|-------------------|-----------------------|---------------|
| ACEHARDWARE | FIRSTSTREETBRIDGE | PIACERE |
| AMERICANLEGION | HAPPYDONUTS | PLANKCOFFEE |
| CHAMBER | KIWANIS | ROCKINACOFFEE |
| CITRUSFAIR | LIONSCLUB | ROTARY |
| CITYPARK | MANAGEMENTCONNECTIONS | SAWANDMOWER |
| CLOVERDALECONNECT | MICHELEHOLLAND | SENIORCENTER |
| CREATIVENOTIONS | PAPASPIZZA | TRADINGPOST |
| EDWARDJONES | PAVELKA | |
| ERINMAVISCLOTHING | PERFORMINGARTSCENTER | |

Cloverdale Connect Direct mailed each month and available at the following businesses:
Dahlia & Sage, The UPS Store, Chamber of Commerce

FACTS FROM THE PAST

by Kay Wells

In the late 1800s, Mr. A. N. Ahrens, Cloverdale citizen and cigar smoker, was mourning the unavailability of fine cigars. So, he decided to “grow his own”.

Sending away for tobacco seedlings, he nurtured them in his greenhouse (seeds require warm temperatures to germinate, about 75-80 degrees) and then planted them on acreage he owned southwest of town. When the crop matured and was cured, he then turned to manufacturing cigars. The company, the Hermitage Tobacco Company, was born in 1901, the cigars manufactured in a local warehouse. The Herald Cigar was the “BEST SMOKE AGOING”.

Sales were good at first, but subsequent harvests were disappointing, and the company failed by 1907. But Mr. Ahrens was undaunted, and opened a little cigar stand near downtown where he hand-rolled and sold cigars.

Source: Images of America CLOVERDALE by Wagele & Gray, and Historical Society records.



DECLARING A HIGHER STANDARD.
HERE AND AROUND THE WORLD.

PERSONAL TOUCH. GLOBAL REACH.

Whether buying or selling a home, Engel & Völkers ensures an experience of the highest caliber. While we have sophisticated systems and smarter strategies, they’re just starting points. It’s our standard of service across the globe that truly set us apart.

If you are curious about the current value of your home, investing to build wealth, searching for your first home, or your dream home, I would be happy to help you fulfill any of your real estate needs.

Learn more at tinashermandevrealstate.com

Tina Sherman
Global Real Estate Advisor
(707) 380-5542
tina.sherman@evrealstate.com
DRE# 02041217



@tinashermandealor @tinashermand1819

©2020 Engel & Völkers. All rights reserved. Each brokerage independently owned and operated. Engel & Völkers and its independent License Partners are Equal Opportunity Employers and fully support the principles of the Fair Housing Act.

CELEBRATIONS OF LIFE

Birthdays, Weddings, Birth Announcements, Anniversaries, Retirements, Memorials

\$125 each - 100 words + photo in print edition and 500 words + photo online at cloverdaleconnect.com



Birthdays can be so much fun and even better when you share. Celebrate with an announcement in **Cloverdale Connect**, tell your friends and family – maybe you’ll get lots of presents! Birthdays can be so much fun and even better when you share. Celebrate with an announcement in **Cloverdale Connect**, tell your friends and family – maybe you’ll get lots of presents! Birthdays can be so much fun and even better when you share. Celebrate with an announcement in **Cloverdale Connect**, tell your friends and family – maybe you’ll get lots of presents!

Place a birthday announcement here in **Cloverdale Connect** next month.



Celebrate your wedding and share your good news. Tell family, friends, and neighbors about your special day. During this time of COVID-19 and limited gatherings it’s even more important to share your wedding announcement with the community in **Cloverdale Connect**.

Celebrate your wedding and share your good news. Tell family, friends, and neighbors about your special day. During this time of COVID-19 and limited gatherings it’s even more important to share your wedding announcement with the community in **Cloverdale Connect**.

Celebrate your wedding and share your good news. Tell family, friends, and neighbors about your special day in **Cloverdale Connect**.



New Baby? You love your new baby and want to share the news. Tell the community about your new bundle of joy in **Cloverdale Connect**. Whether your are a proud parent, grandparent, aunt or uncle, be sure to share your delight.

New Baby? You love your new baby no matter what it looks like. Tell the community about your new bundle of joy in **Cloverdale Connect**. Whether your are a proud parent, grandparent, aunt or uncle, be sure to share your delight.

Tell the community about your new bundle of joy with a birth announcement in **Cloverdale Connect**.



THANK YOU

Our sincere thank you to everyone for your kind words and expressions of love and sympathy sent during the devastating loss of our **Diane Marie**.

She fought long and hard and hung on as long as she could.

We love and miss her so very much.

Love,

Carolyn and Bob

Memorialize your loved one in **Cloverdale Connect**.

Out of the DARKNESSSM

COMMUNITY WALKS

American Foundation for Suicide Prevention

All month, mental health advocates, prevention organizations, survivors, allies, and community members unite to promote suicide prevention awareness. Research shows people who are having thoughts of suicide feel relief when someone asks after them in a caring way. Findings suggest acknowledging and talking about suicide may reduce rather than increase suicidal ideation. Individuals are more likely to feel less depressed, less suicidal, less overwhelmed, and more hopeful by after speaking to someone who listens without judgment. Studies indicate that helping someone at risk create a network of resources and individuals for support and safety can help them take positive action and reduce feelings of hopelessness.

The American Foundation for Suicide Prevention has a local chapter – AFSP Greater San Francisco Bay Area which is active throughout the year with educational, programmatic, and outreach activities as well as the Out of the Darkness Community Walk each fall. They focus on eliminating the loss of life from suicide by: delivering innovative prevention programs, educating the public about risk factors and warning signs, raising funds for suicide research and programs, and reaching out to those individuals who have lost someone to suicide. While the Out of the Darkness Walk in Santa Rosa fundraising walk is going to look different this year, the mission to Save Lives and Bring Hope to Those Affected by Suicide has not changed. Sonoma County participants are a strong and resilient community, united in our effort to fight suicide, raise awareness, educate our communities, support those who have lost loved ones, and support those with lived experience.

Join the Santa Rosa Out of the Darkness Experience on September 26. The Santa Rosa Out of the Darkness Experience is a real walk, but on your own terms: you get to choose your own course, what time you start, and who walks next to you (within social distancing guidelines)! The walking is real—it's the community that's virtual this year. To join the walk or for more information, please contact Fran Templin, Team Zane –You Matter, ftemplin3@gmail.com. A Sonoma County resident, Fran is the wife of Dr. Jeff Templin DDS – they lost their son Zane to suicide and now work with others through education and advocacy.

Watch "Suicide: The Ripple Effect", a feature length documentary on the devastating effects of suicide and the positive ripple effects of advocacy, inspiration and hope that are helping millions heal & stay alive. The film highlights Kevin Hines, who at age 19, attempted to take his life by jumping from the Golden Gate Bridge. Today Kevin is a world-renowned mental health advocate, motivational speaker and author who travels the globe spreading a message of hope, recovery and wellness.



Vickie Norris
707.433.0336

www.Webistree.com
Vickie@Webistree.com

319 First Street • Healdsburg, CA 95448

- E-Commerce, Informational or Blog Websites
- Client Maintained System (CMS)
- Search Engine Optimized (SEO)
- Integrated Google Tools
- Integrated Social Networking

SAVE THE DATE(S)!

THIS SEPTEMBER CPAC IS BRINGING YOU A NEW WORK FESTIVAL AROUND THE THEME OF INJUSTICE



- Sept 10th: 7pm *The Phone Call* by Amy Lovato
- Sept 11th: 7pm *Shattered Dreams* by Dianna Grayer
- Sept 12th: 7pm *Midnight at La Catrina* by Madeline Puccioni
- Sept 13th: 2pm *Josefina* by Nadia Flamenco
- Sept 18th: 7pm *F*ck This Noise* by Erin Lane
- Sept 19th: 7pm *Magnolia Book Club* by Stephen Cannon
- Sept 20th: 2pm *Not Meant to Be Apart* by Sadrac Fernandez

EACH PIECE IS ROUGHLY 10-20 MINUTES IN LENGTH AND WILL BE SHARED VIA SOCIAL MEDIA WITH A TALKBACK FOLLOWING THE PERFORMANCE. 20% OF ANY DONATIONS RECEIVED WILL GO TO THE ACLU OF NORTHERN CALIFORNIA

STAY TUNED FOR MORE INFO!

DAHLIA & SAGE

COMMUNITY MARKET

Featuring specialty groceries, organic produce, quality beer & wine, organic free-range meat & poultry and wild-caught fish & seafood.

ORDER ONLINE FOR DELIVERY & CURBSIDE PICK UP

DAHLIASAGEMARKET.COM

(707) 669-2320
115 EAST 2ND STREET
CLOVERDALE



Kiwanis Club Book Giveaway October 3rd

"One of our main focuses is to put books in the hands of Cloverdale kids," explains Julie Carter, current club co-President, "and the COVID-19 crisis isn't stopping us!" On Saturday, October 3, the Kiwanis Club will host its second Pandemic Book Giveaway from 10 am to 2 pm on the lot at the north side of Ace Hardware.

"During our first pandemic book giveaway on August 1, more than 600 books found new homes," Carter said. "The Kiwanis Club was especially happy to welcome many young families to the event!"

The Kiwanis Club continues to provide free books every month to Cloverdale children under five years of age via the Cloverdale chapter of Dolly Parton's Imagination Library. Families may register to receive books at CloverdaleImaginationLibrary.org. Kiwanis also provides 100's of books to children at Jefferson and Washington schools every year.

Contact Julie Carter at Julie@JulieCarter.org.

Evacuation Information

By leaving early, you will give your family the best chance of surviving a wildfire. Help firefighters by keeping roads clear of congestion, enabling them to move in and out of your neighborhood, and thereby doing their job - saving the lives and property of people affected by the threat of fire.

Keep a flashlight handy for a night evacuation.

Keep the six “P’s” ready, in case immediate evacuation is required:

People and pets

Papers, phone numbers, and important documents

Prescriptions, vitamins, and eyeglasses

Pictures and irreplaceable memorabilia

Personal computers (information on hard drive and disks)

“Plastic” (credit cards, ATM cards) and cash

If you're told to evacuate, leave early enough to avoid being caught in fire, smoke, or road congestion. Don't wait to be told by authorities to leave. In an intense wildfire, they may not have time to knock on every door. If you think it's time to leave, don't wait - get out.

If you see smoke or fire in your area, immediately report it by dialing 9-1-1. Remember to take note of the location so that the dispatcher can send emergency equipment to the correct location before you hang up.

Evacuation May Be Necessary

Back your car in the garage heading out with windows closed. Be sure to keep your keys with you so that you can evacuate quickly should it become necessary.

Close the garage door, leave it unlocked, and disconnect automatic door opener in the case of power failure.

Keep a flashlight and portable radio with you at all times and stay tuned to your local news station.

Outdoors

Move combustible yard furniture away from the house or store it in the garage.

Cover windows, attic openings, eaves, and vents with less combustible material, such as 1/2-inch or thicker plywood.

Close window shutters and blinds if they are fire-resistant.

Attach garden hoses to faucets and place them so that they can reach all areas of your house.

Place a ladder against the house on the opposite side of the approaching fire for access to the roof.

Shut off Butane/propane or natural gas valves.

Indoors

Close all windows and doors around your home to prevent sparks from blowing inside.

Close all doors within the house to slow fire spread inside the house.

Turn on the lights in all the rooms of your house, on the porch, and in the yard. Your home will be more visible through the smoke or darkness.

Move furniture away from windows and sliding glass doors to avoid ignition from the radiant heat of the fire.



**Cloverdale
Community
Youth**

Cloverdale Connect would love to recognize our local youth by spotlighting them in a monthly

feature. Who is doing something for the good of the community? Who is showing initiative? Who has achieved something special and deserves recognition? Our children are our future – let's celebrate their successes! Submit your suggestions with a photo to info@cloverdaleconnect.com



Eagle Pride High School Memories

Send your favorite Cloverdale High School memories for upcoming issues of *Cloverdale Connect*. Good stories, sad stories, personal growth stories, favorite teacher and why – what sticks out in your memory of your time at Cloverdale High School? Be sure to provide the year for reference and even better, a photo.

Frank Christ – Helpful Information In a Time of Need

Recently Frank Christ did a phenomenal job keeping people informed via Facebook on the status of the Sonoma County fires. Frank is a professional photographer, railroader, and Radio Tech (Amateur Radio Operator).

Frank and his family moved to Cloverdale in 2012 after having been born in San Francisco, and having lived in Rohnert Park and Kentfield.

Frank has endured TWO house fires in his lifetime, one that was here in Cloverdale in 2014. Those fires contributed to severe PTSD and cause him to keep an ear to anything within 30 miles that could affect his family. He is fortunate to have good friends and family within both CDF (CalFire) and local agencies in various positions throughout the years and they keep him “secure”. Frank has always listened to the Police/Fire radios but started paying closer attention to the fires the night of the Tubbs Fire in 2017. The smell of smoke in Cloverdale was super strong about 1 A.M. and he immediately went to his radios to find out what was going on. Franz Valley was the first road mentioned in the broadcast.

Working tirelessly and on little sleep, Frank keeps the updates to the community going. Asked to describe himself, Frank replied: “I’m one of the kindest people you’ll meet. I’m a great photographer and a good friend. The handful of people in town that actually know me and have met me can attest to that.” He claims to have a tendency to stay to himself and does his best to stay out of trouble and keep occupied with hobbies and work.

Cloverdale Connect extends a community “Thank You” to Frank Christ for keeping us informed and aware with accurate up-to-date information during the recent fire crisis.



Cloverdale Cares

A Guide to Local Service Clubs & Non-Profit Organizations
Sponsor this page for just \$45/mo

Cloverdale Chamber of Commerce

126 North Cloverdale Blvd.
Cloverdale 95425
707.894.4770
info@cloverdalechamber.com

Cloverdale Volunteer Firefighters Assoc.

707.894.3545
black@cloverdalefire.org

Rotary Club of Cloverdale

P.O. Box 388
Cloverdale 95425
707.894.5789
markthayer411@yahoo.com

Knights Of Columbus

P.O. Box 762
Cloverdale 95425
707.894.2514
kofc@msn.com

Kiwanis Club of Cloverdale

P.O. Box 367
Cloverdale 95425
707.548.8706
julie@juliecarter.org

Cloverdale Lions Club

P.O. Box 763
Cloverdale 95425
www.cloverdalelionsclub.com

Cloverdale Roadrunners Car Club

[https://www.facebook.com/
CloverdaleRoadrunnersCarClub/](https://www.facebook.com/CloverdaleRoadrunnersCarClub/)

Boys & Girls Club of Sonoma County/ Marin

1400 N. Dutton Avenue
Santa Rosa 95401
707.528-7977
jweymouth@bgcsonoma-marin.org

Jefferson Elementary PTA

315 North St
Cloverdale 95425
angela.jeffersonpta@gmail.com

Courtney's Pumpkin Patch

529 Venezia Way
Cloverdale 95425
707.894-2038
courtneypumpkinpatch@comcast.net

Cloverdale Ponytail League

111 Brookside Drive
Cloverdale 95425
707.321.1917

Cloverdale Senior Multipurpose Center

311 Main St
Cloverdale 95425
707.894.4826
melanie@cloverdaleseniorcenter.com

Cloverdale Citrus Fair

1 Citrus Fair Drive
Cloverdale 95425
707.894.3992
info@cloverdalecitrusfair.org

C.A.R.E. Foundation

P.O. Box 770
Cloverdale 95425
cusdcare@gmail.com

American Legion

P.O. Box 535
Cloverdale 95425
707.894.0712
fermel@comcast.net

Cloverdale Performing Arts Center

209 N. Cloverdale Blvd.
Cloverdale 95424
707.894.2214
tickets@cloverdaleperformingarts.com

Alexander Valley Film Society

121 East 1st Street
Cloverdale 95425
707.893.7151
kathryn@avfilmsociety.org

Friends of the Cloverdale Library

401 N. Cloverdale Blvd.
Cloverdale 95425
707.894.5271
friendscloverdalelibrary@gmail.com

Cloverdale Arts Alliance

204 N. Cloverdale Blvd.
Cloverdale 95425
707.894.4410
info@cloverdaleartsalliance.org

Cloverdale Historical Society

215 N. Cloverdale Blvd.
Cloverdale 95425
707.894.2067 office@cloverdalehistory.org

Cloverdale Toastmasters

949-228-3932
garrett254@yahoo.com

Feline Rescue

707 494 5544
wesavecats@gmail.com

Cloverdale Cares Sponsors

Pavelka Team • Management Connections • Dahlia & Sage



Supporting Our Communities, Together

In this unprecedented time, small businesses and nonprofit organizations are being tested like never before. Bank of Marin is open and ready to help the customers and the communities that have always supported us.

In recent years, we have worked together to overcome many significant challenges. We know you're doing your part during this crisis.

You can count on us to do ours.



Bank of Marin

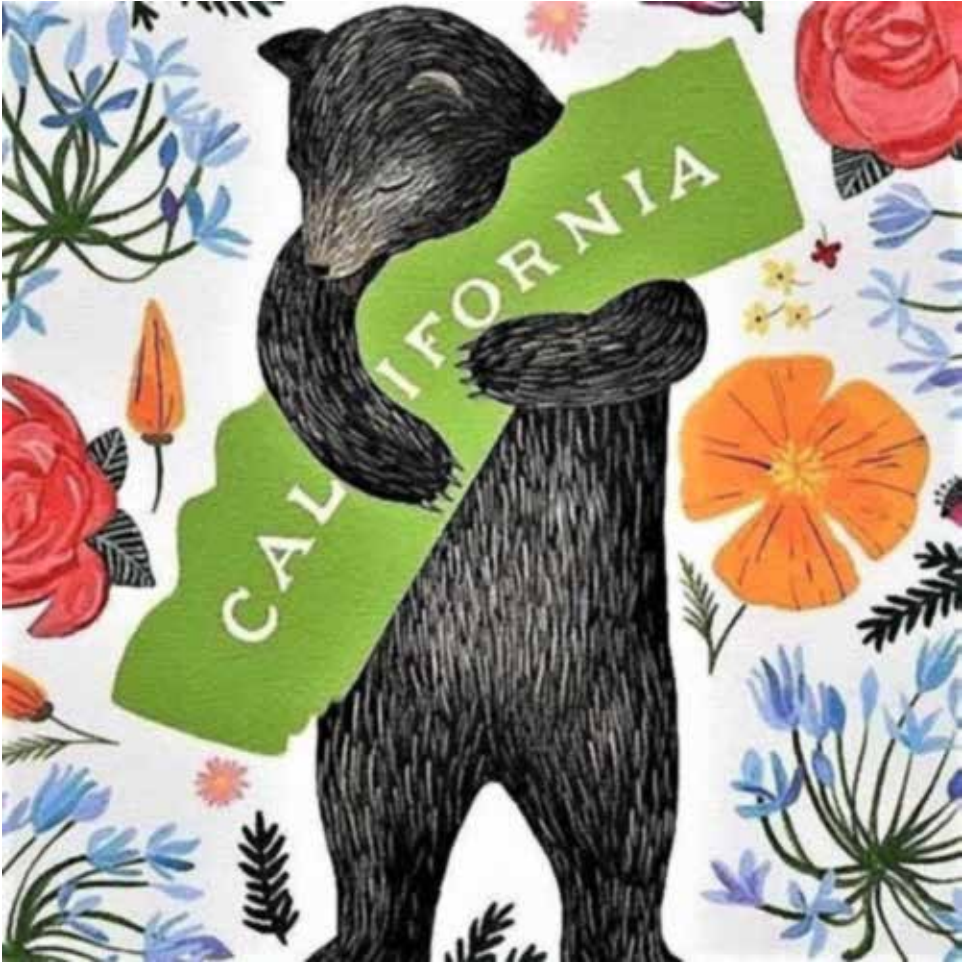
SERVING THE BAY AREA • BANKOFMARIN.COM



Member FDIC

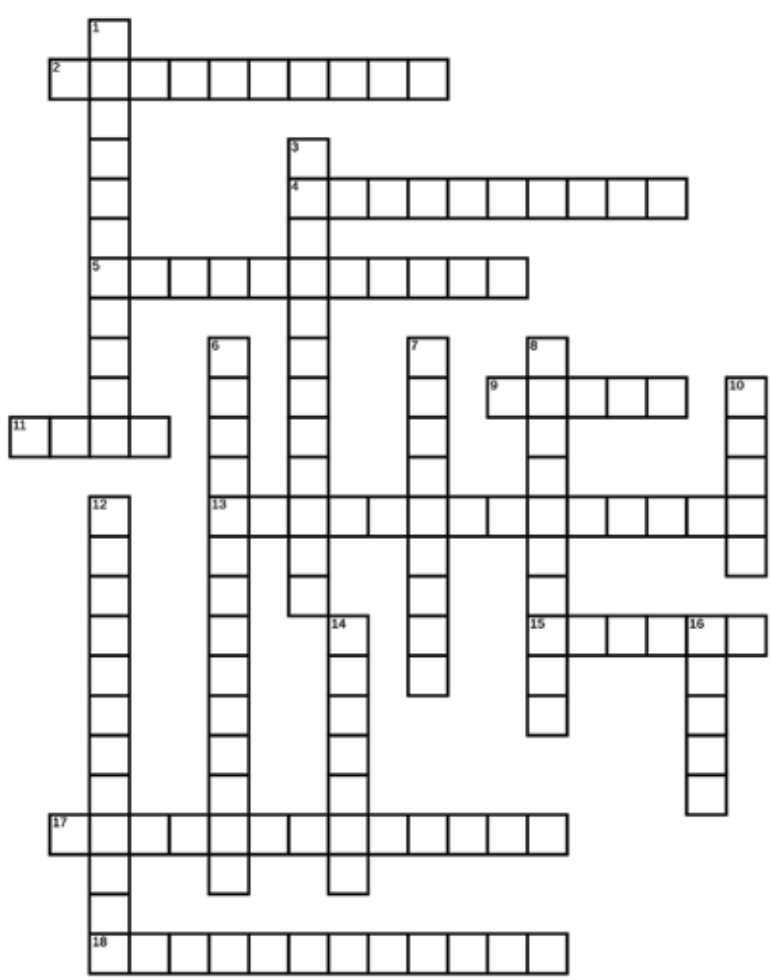


Brigid Wasson recently evacuating her horses, Maggie (tan Fjord) and Sunny (red Arab), from Dutcher Creek due to the Walbridge fire.



Artist Annie Galvin

Fall Into Winter



Across

2 Tiny vignettes around town

4 Where are our readers seen?

5 Fall Festival (except this year)

9 "Arrrgh, walk the ----!"

11 Vintage chic

13 Outdoor art stroll

15 Fall

17 Which dog is featured?

18 Community helpers

Down

1 Cheery sweet treats

3 Monthly chuckle

6 Where can you find an XL Pine Mountain?

7 Our favorite pumpkin patch


8 A river runs through it

10 Soaring bird of prey

12 Decorative pebbles

14 Social distance measurement



16 What's on our faces?



WESTMINSTER WOODS

Nature School

Connecting students with the support they need during remote learning *through Adventure, Play, Connection and Reflection.*

Fall Program in Occidental, CA

Ages 6-14

8:00 am - 3:00 pm

Two-day and five-day options

COVID-19 policies and procedures

Activities Include:

- Social Emotional Learning
- Independent Homework Support
- Environmental Education
- Team Building
- Forest Hikes
- Art Projects, Journaling, and More!

Nature-based learning, socially distant small groups, and schoolwork support for students utilizing virtual school options.

Now Enrolling!

Visit westminsterwoods.org for more information

Cloverdale Community Garden

Cindi & Pat Buell, who manage the Cloverdale Community Garden, have recently reported that they have donated over 170 pounds of veggies and fruit produced in the garden to the local Food Bank. *Cloverdale Connect* sends a big “Thank You” to all who participate to support this community treasure. Be sure to make a note on your calendar: The next scheduled work parties are September 12th and 25th (9:00 to 11am).

MISERLIAN BAKER

REAL ESTATE SALES & PROPERTY MANAGEMENT

BROKER DRE 01165299

(707) 894-9201

WWW.ANEBAKER.NET



Cloverdale Connect

Classified section for your
ad or listing - tell us what
you need us to know
in 25 words!
25 words for \$25!

LOCAL CARE FOR LOCAL ELDERS

is a Cloverdale support
network of independent
home care providers for
seniors in need.

Contact Janet 894-7345



CYNTHIA'S DOG GROOMING

Presents:

Kai Lula

Dog of the Month

PET SITTING IN YOUR HOME

Dogs, cats, farm animals.
Medical and behavioral
special needs welcomed.
Drop in and overnight visits.
Covid-19 safety certified.
www.gooddogspetsitting.com
707-814-5935

RECYCLE PICK UP

Will pick up Aluminum
Cans, Glass & Plastic
Bottles, Efrain Ruiz,
707-530-3992 or Facebook:
Community of Cloverdale.



Pavelka's Puns

I'm reading a book
about anti-gravity.
I just can't put it down.

Your Cloverdale Connections



Katie Silva, DVM
Amy Smith, DVM

707.894.3951

20 Industrial Drive
Cloverdale, CA 95425

Laurie Kneeland
707-328-2147
Mobile Notary

Daryl Robertson

PRECISION
Excavating and Grading, Inc.

707-280-5485 • dcrobertson76@gmail.com

PO Box 276, Cloverdale, CA 95425

CLOVERDALE
Saw & Mower
Center

CHUCK SIBERT
DARREN SIBERT
Bus. (707) 894-2273
Fax (707) 894-8485
clsaw8@yahoo.com



1301 South Cloverdale Boulevard, Cloverdale, CA 95425



Alvin L. Myers
Financial Advisor
231 North Cloverdale Blvd
Cloverdale, CA 95425
707-894-0277

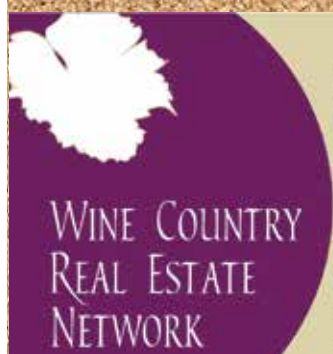
Edward Jones
MAKING SENSE OF INVESTING
edwardjones.com

One Stop Shop for All Your Needs
Printing, Faxing, Notary, Shredding, Packing,
Shipping

The UPS Store

1123 S Cloverdale Blvd Ste E
Cloverdale, CA 95425
Mon - Fri 08:00 AM-06:00 PM
Saturday 09:00 AM-05:00 PM
Sunday Closed

P: (707) 894-8560
F: (707) 894-8541
store63556355
@theupsstore.com
theupsstore.com/6355



Brenda Vronoski,
Broker DRE # 01454150
Shalia Vanderweken,
Broker DRE # 00517842

1129 S Cloverdale Blvd
Suite C
Cloverdale, CA 95425
707.894.9006

team@wcrealestatenetwork.com



PROTECT YOUR FAMILY. PROPERTY. ASSETS.
WILDFIRE HOME DEFENCE SERVICES

CONTACT US TODAY TO
SCHEDULE A CONSULTATION 707-800-2476
ROBERT.PAYNE@ALLRISKSHIELD.COM
WWW.ALLRISKSHIELD.COM

F. Griffiths
Construction

Frank Griffiths
OWNER / OPERATOR

HOME REPAIR, REMODEL & NEW CONSTRUCTION
Lic# 1012797

o: 707-837-2894 | c: 707-360-5955
email: fwg2@outlook.com



707-431-0400
www.apluslocksmith.info
CA Cont. Lic. #971620

Lock and Key Repair & Sales

Serving Northern California
for more than 35 years

NORTH BAY VEHICLE REGISTRATION SERVICE

VEHICLE TRANSFERS OF ALL KINDS

"If we can't title it, then it can't be done"

- COMMERCIAL VEHICLES
- WATERCRAFT
- OUT OF STATE TITLE
- LIEN SALES
- REGISTRATION RENEWALS
- VERIFICATIONS

LICENSED & BONDED

Angela Cordova 707.577.8277
angelacordova@comcast.net