



Cloverdale Connect

Connecting Our Readers with Local Resources * Events * People

Cloverdale Connect is published monthly and distributed to Cloverdale area homes via direct mail to over 5,800 households.

www.CloverdaleConnect.com

"Where the vineyards meet the redwoods"

August 2020



Thank you Cloverdale community! We are overwhelmed with the positive responses we've received for *Cloverdale Connect* via emails and comments on Facebook. We appreciate every word. Here are just a few of the comments we've received: "Great local paper. Loved finding it in our mailbox today!" "I just received and read my first issue! I love this little newspaper"

This month, we're happy to present some Cloverdale history, a focus on gardens, fairy doors, painted rocks and crafting, a new section for life's celebrations and milestones, results from last issue's survey and more.

Remember, *Cloverdale Connect* is our paper for our community. Be sure to send news, information, photos and comments to info@cloverdaleconnect.com. Look inside for all the ways you can be involved with *Cloverdale Connect* from featured photo opportunities to advertising your local business.

Support our *Cloverdale Connect* advertisers and tell them you saw their ad in our paper. We appreciate their local business - without them, this "little newspaper" that people love could not exist.

See you around town!



Seen Around Town - Ronnie Campos of The Outpost enjoying *Cloverdale Connect*



Front Page Photo Contest Winner

Erica Brown's photo entry taken at Furber Park on Foothill Road

Congratulations!

She wins a drink from **Rockin'A Adventure Cafe**

Want to "Connect" with the Cloverdale Chamber of Commerce?

Here's how:

Join the Chamber. Application on-line @ www.cloverdalechamber.com



Facebook



Instagram @ [experiencecloverdale](https://www.instagram.com/experiencecloverdale)



info@cloverdalechamber.com

EXPERIENCE CLOVERDALE



Experienced, Caring and Down to Earth.

Local Knowledge and Passion with a Global Reach serving all property types throughout Sonoma County and beyond.

COMPASS

..

Jane & Ron Pavelka

Seasoned Wine Country Natives & Real Estate Professionals
707.480.1268
pavelkas.com
DRE 01381422 | 01476514



Compass is a real estate broker licensed by the State of California and abides by Equal Housing Opportunity laws. License Number 01866771. All material presented herein is intended for informational purposes only and is compiled from sources deemed reliable but has not been verified. Changes in price, condition, sale or withdrawal may be made without notice. No statement is made as to accuracy of any description. All measurements and square footage are approximate.

POSTAL CUSTOMER

PREST STD
ECRWS
US POSTAGE
PAID
PERMIT #16
Petaluma CA 94999

Look Inside!

Cloverdale Connect PO Box 404, Cloverdale, CA 95425
Survey Results, Community Garden, Fairy Doors, Mask Makers, and More!



**Law Offices of
James F. DeMartini**

James F. DeMartini, Esq.
Paula S. Hall, Esq.
ATTORNEYS AND COUNSELORS AT LAW
"Cloverdale's Full Service Law Firm"

- Living Trusts, Wills, Power of Attorney
- Probate and Trust Administration
- Conservatorships and Guardianships
- Business and Real Estate
- Personal Injury and Accident Litigation
- Employment and Law and Dispute Mediation
- Divorce/Custody/Child Support



115 West First Street • Cloverdale • 707-894-5000
cloverdalelaw.com

Cloverdale Library Curbside Service



Meet one of the faces of Sonoma County Library, Cloverdale branch. Donna Romeo. You will see her or one of her team mate's smiling eyes when you come to pick up your items at the Library's Curbside service. Curbside service is available from 10-3.

Comments, questions, or ideas of how we can better serve our community are welcome. Please do not hesitate to call the library at 707 894-5271.

Another way to meet Donna is to join the adult book group. The book group meets the second Tuesday of the month at 2 pm via Zoom. She will show you how to read books online or you can request a physical copy from the library. For more information or to join, please email: dromeo@sonomalibrary.org

Reader Survey Results from Volume 1, Issue 1

Answers Ranked According to Compiled Preferences

1. What do you like best about Cloverdale

Small Town Feel, Parks, Variety of Businesses, School System, Service Clubs, Recreational Opportunities,

Other: country feel, cool summer evenings, Eagle's Nest, Plank, Cloverdale Nursery, The Estate, scenery of Alexander Valley, welcoming attitude toward newcomers, friendly people, everything, walking trails, trees, people who volunteer

2. What does Cloverdale need most?

Car Wash, Major Supermarket, Skate park, dog park, More traffic lights on Cloverdale Blvd.

Other: dry cleaner, Smart Train, restaurants & wine tasting room, something for the kids to do like Scandia, bowling alley, batting cages; more creative or upscale restaurants, shoe store, attract & retain a wider variety of small businesses that attract both residents and visitors, a city government that doesn't live in the past, traffic light at Treadway, four way stop at Treadway, public bathrooms, more business shopping developments, better transportation services

3. How long have you lived in Cloverdale?

Over twenty years

Five to ten years

One to five years, less than one year

4. Do you use or attend any of the following?

Friday Night Live, Citrus Fair, Car Show, 4th of July Fireworks, Cloverdale Senior Center, City Council Meetings, Public Swimming pool, Food pantry/free food programs

Other: Yorty Creek, river, cemetery, Pumpkin Patch, library, Plank, Eagles Nest, Cloverdale Nursery, 68 Shuttle bus, Creative Notions, Ray's Market, City Park, Farmer's Market, swimming pool if it were solar heated, jazz club, local businesses & restaurants

5. What is your favorite non-profit in Cloverdale?

Cloverdale Performing Arts Center, Cloverdale Senior Multipurpose Center, History Center, Sculpture Trail, Lions Club, Cloverdale Arts Alliance, Rotary, American Legion, Alexander Valley Film Society, Kiwanis, Knights of Columbus, Eagle Pride Boosters Club, Food Pantry

Other: Jefferson PTA, library, Toastmasters, Boys & Girls Club, Vet's Building

6. Describe your experience living in Cloverdale in one word:

Peaceful, Safe, Quiet, Comfortable, Great, Friendly, Refreshing, Community, Pleasant, Wonderful, Fortunate, Mundane, Home, Happiness, Nature, Best, Slow paced & scenic, Glorious, Walking, Uplifting, OK, Interesting, Content, Happy, Heaven, Awesome, Pleasurable

Additional comments:

"We do need a traffic light at Cloverdale Blvd and Treadway Dr"

"Speed bumps on Foothill Drive"

"City needs more education or enforcement in fire-hardening homes/properties"

"Love small town feel. Love hiking trails"

"Too far removed from healthcare & other things I need, living here is difficult in my old age."

"I'm concerned about our economic health going forward after (and during) the current pandemic. Are we preparing for the worst while hoping for the best?"

"Small town at its best"

"Some think this town should be "artsy". Not my thing – prefer a "hometown" feel."

"I love small town living. But my motto for Cloverdale is "COMING SOON".

"Both my adult children and my grandchildren live here too and love it!"

"Having participated in other Chambers of Commerce, I am especially happy with Cloverdale's"

"Would like conversation on closing First St. between Blvd. & Main to through traffic and open to pedestrians; it would help businesses there."

"Transportation between Cloverdale and Ukiah"

"I want to see a major effort to make Cloverdale a diverse, integrated community – now, please"

"Would enjoy a little more culture & amenities – need a better grocery store"

"Love being involved in our community. Waiting – impatiently! - to be involved again."

"Would be great if there was something similar to the "Epicenter" like in Santa Rosa here in Cloverdale. A place where children and adults can enjoy (day/night). "

"Would be great to have the dogs on leash law and the law of no skateboards or bikes on the sidewalks followed through. Too many barking dogs left to bark freely. Would like more supervision of children at Friday Night Live"

"Support for small businesses"

"Need Urgent Care for for weekends"

Cloverdale Toastmasters

Meets weekly on Zoom
Fridays 7-8 a.m.
949 228-3932
Garrett254@yahoo.com

Cloverdale Toastmasters Club has been teaching public speaking and leadership in Cloverdale since 1992.

Cloverdale Connect Published monthly, direct mail distribution 5813, and at participating merchants

Editor, Publisher, Advertising: Dana Johnson • **Graphic Designer, Comptroller:** Vickie Norris

707.322.3403 • info@cloverdaleconnect.com • adsales@cloverdaleconnect.com •

production@cloverdaleconnect.com • billing@cloverdaleconnect.com

Thank you to the wonderful people and businesses listed who have contributed to make the **Cloverdale Community Garden** the treasure that it is.

- Pat & Cindi Buell
- Jane & Ron Pavelka
- Bett Carlson
- Dave Delgado
- Kendra Beltran (birdhouses)
- Neena Hanchett
- Savanah Hemphill
- Green Thumb Garden Club
- Mike Boehm – Tractor and Weed Eating
- Advanced Earthworks – Adam Vlasak
- W Real Estate – Tedi and crew – Clean-Up
- Dennis & Linda Leibl
- Reuser Inc.
- Todd Lands Construction
- IROC
- City of Cloverdale
- Economy Tree Service
- Cloverdale Nursery

Sorry if we missed anyone - you are all appreciated

The Creative Corner

by Christy Latchford

In a time when technology has seemingly become king, there is a rebellious band of us running the other direction. Pictured is the little free library for kids that I recently crafted as a gift to Cloverdale.

“When you read a book as a child, it becomes a part of your identity in a way that no other reading in your whole life does.” - Kathleen Kelly, You’ve Got Mail.

Cloverdale already has two Little Free Libraries but I wanted to make one just for kids. I spent hours scavenging Pinterest for ideas, applying for a LittleFreeLibrary.org charter number so those traveling through town can find it as well and a plan was hatched! Time to order pieces, multiple trips to ACE, dig out needed chemicals and ask for donations of books and then I dove in, letting my imagination take over to create what will be safe, weather tolerant and accessible as you walk by.

After ordering a metal locker online I started to build around it and infuse some fun and creativity, transporting me



Metal Free Library for Kids

back to my childhood as Shel Silverstein’s “The Giving Tree” was my muse. A little whimsy and humor, some paint, ModgePodge, E6000 epoxy, Gorilla Spray Adhesive, the list goes on. If you would like to check it out, swing by Muscat Drive.

Going forward in **Cloverdale Connect**, I will share DIY projects by myself and other local residents who share the desire to create and inspire others, challenging that although technology is certainly here to stay, it may in fact not be king.

National Weather Service Monitors in Cloverdale



Last year, Raymond Pesce and Dana Johnson of Cloverdale were chosen to be official National Weather Service Observers. The NWS Cooperative Observer Program, created in 1890 is part of the National Oceanic and Atmospheric Administration. More than 8700 volunteers take observations on farms,

in urban and suburban areas, National Parks, seashores and mountaintops.

Raymond and Dana provide observational meteorological data, usually consisting of daily maximum and minimum temperatures, 24 hour precipitation totals, information that defines the climate of the United States and to help measure long-term climate changes.

The Cloverdale National Weather Service Cooperative Observing station was established and began reporting temperature and rainfall on July 21, 1950. The weather station was first located at the Rounds and Kilpatrick Lumber Company. In 1992 the station was moved to the Cloverdale Fire Department where it remained until 2019.

Hearing that the NWS was looking for a new site, Dana contacted the NWS. After interviews and a site inspection, the weather station was installed at Ray and Dana's home on Chablis Way. Each day the daily maximum and minimum temperatures and the precipitation amount are collected via the weather station, fed into a monitor in the home and then that data must be entered into a digital logbook on the computer. The equipment that is installed consists of a large rain gauge and an air temperature monitor that looks somewhat like a beehive on a pole.

New Plant Sharing Shelves



Now installed just inside the gate at the Cloverdale Community Garden are plant-sharing shelves. You can leave plants for adoption or take a plant and give it a new home. The Cloverdale Community Garden is located on Cloverdale Blvd. just south of Pick's.

Cloverdale Cottage Garden Handcrafted Soap Porterfield Creek Body Scrub



100% of proceeds go directly to WPC Food Pantry
cloverdalecottagegarden@gmail.com



Management Connections

"The Personnel Advantage"

Celebrating 29 years in business.



The Animal Hospital retained **Management Connections** when they hired **Cathy DeMattei**, retiring this month after 24.5 years.



Management Connections also placed **Colleen Hale** with Dr. Hoyer in 1996, where she too plans to remain until she or Dr. Hoyer retires.

Whether you need to fill a job or are looking for a new career, contact Management Connections

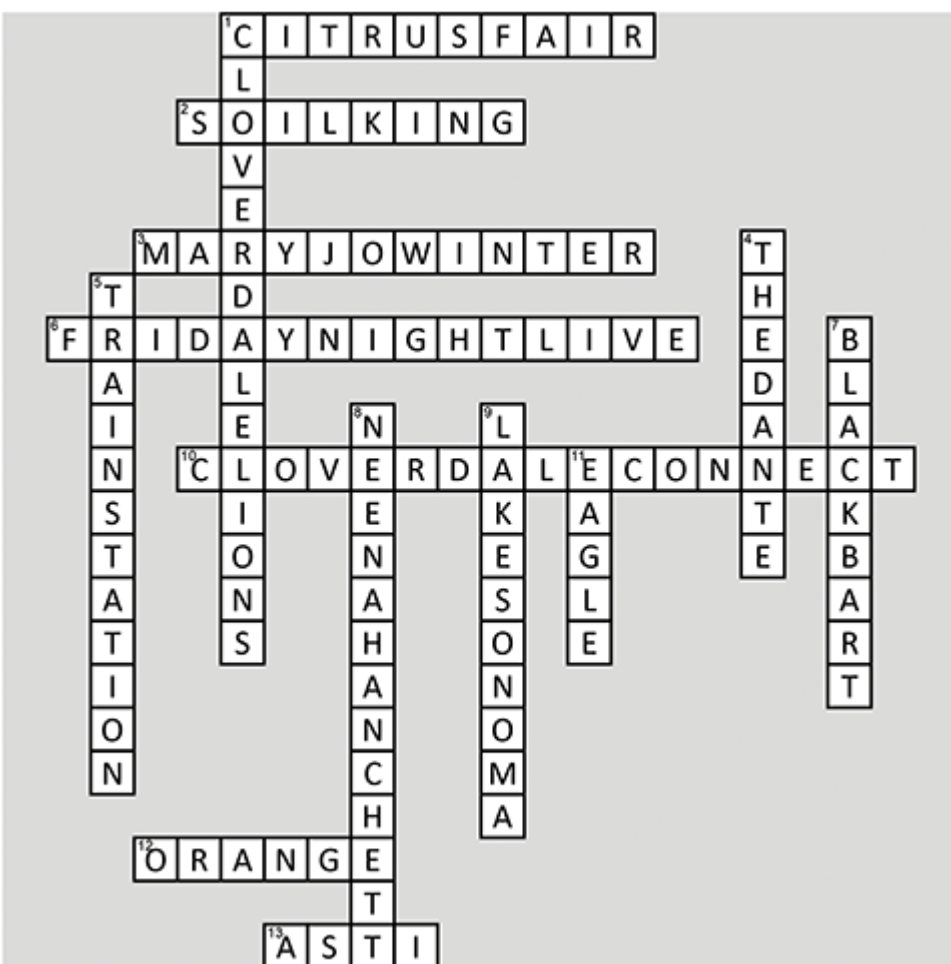
CONNECTING LOCAL TALENT WITH GREAT EMPLOYERS

Full time & Part Time, Temporary & Long Term Positions

www.norcaljobs.com

707.894.4400 or 707.263.4JOB

Cloverdale Connect Crossword Puzzle Answers from Volume 1 Issue 1



Be Seen Around Town

Here's your opportunity to be famous! Each month we feature one local person in a photo on the front cover reading the latest issue of *Cloverdale Connect*. It could be you! Each month we draw a winning name from those who have sent us an email and arrange to take a photo of you reading the paper somewhere in our community. Running for city council? Looking for new friends? Want to promote your own business? Contact us: info@cloverdaleconnect.com



Gas BBQ Tip: Want to know how full your propane tank is without weighing it? Pour hot water down the side, and use your hand to feel where it's cool. The hot water warms the empty area and stays cool where there's propane. This will let you know if you're good-to-grill or need to go to **Cloverdale ACE Hardware!**

CPAC Fundraiser

This beautiful Mini Cooper was generously donated to the Cloverdale Performing Arts Center by Maeta Emmons to sell as a Fund Raiser. This 2004 Mini Cooper S, 2 door hatch back has only 25,600 miles and the interior and paint are like new, and has new tires and a 6 speed manual transmission. It's been garaged for its lifetime.

The starting bid is \$5950 – bid high to support the Cloverdale Performing Arts Center! Please message Roger Quintin (rogerq@sonic.net) if you have questions or if you would like to take a look at the car. This is your chance to own a fun car and support the Cloverdale Performing Arts Center.



Cloverdale Community Mask-Makers



Pictured: Lynn, Leilani, Nila, Daisy, Tammy Azcarate & Maxine Bate
Not pictured: Sherry Wright, Ipolani Bovee, Sherry McGinnis (launders & irons fabric)

Be Prepared – Protect Your Estate

Have you wondered “should we get a living trust for our estate” rather than a Will. Living Trusts have become the “go to” estate planning device.

A Trust is a legal relationship that involves three parties: the trustor, the trustee, and the beneficiary. The trustor transfers his or her assets to the trustee, who holds, manages, and distributes those assets for the benefit of the beneficiary.

A Living Trust is a trust you create to hold your assets for your own lifetime. In a typical Living Trust, you are the trustor and the trustee and your children are the beneficiaries. If you become incapacitated, the trust names a successor trustee to manage things for you. Upon your death, the trust directs how the trust assets are to be distributed. A Living Trust is revocable, meaning you can terminate the trust or amend it at any time. Thus the term sometimes used for these trusts is “Revocable Living Trusts.”

The primary advantage of a Living Trust is that it avoids probate. Probate is the process of administering and distributing your estate under the local court's supervision following your death. Probate can be lengthy and expensive. Unlike assets in a Living Trust, assets passing under a Will generally must go through probate.

Under California Probate Code, the executor and the trustee both receive 4% on the first \$100,000, 3% on the next \$100,000 and 2% on the next \$800,000. So for an estate worth \$600,000 the fees work out at approximately \$15,000. So if you own a home in Sonoma County your executor plus Trustee fees are about \$30,000.00 plus, while administration of a Trust can be as little as \$1500. Costs of drafting a trust vary with the number of children, the number of properties and the complexity of your distribution. Legal costs run from \$1500.00 up to \$5000.00.

Living Trusts also offer more privacy than Wills do. As part of probate, a Will must be filed with the court and becomes a document of public record. A Living Trust, however, does not need to be filed with the court.

A Living Trust is more expensive to set up than a Will, because it requires the additional step of transferring assets into it after it is written. This includes significant bank accounts and real property. If your assets you wish to pass on are not held by the Living Trust when you pass they will have to be probated which was to be avoided.

The Story Behind The Monument

By Mary Jo Winter



All of the names are on there, but this particular shot only shows the name of Violet Crow, Susie's 16 year old sister, and their friend, Mrs. Laura Daniels.

This is one of the ladies who drowned - Susie Elizabeth Crow Abshire. The little boy is her son, Francis Presley Abshire. Picture was taken in either 1892 or 1893.

Cemeteries are history repositories, filled with real life stories, many of which have been lost or forgotten over the course of time. An obelisk shaped monument at Cloverdale's Riverside Cemetery holds one such story.

On April 4, 1902, three women drowned while trying to cross the river in a light buggy. Sisters Susie Elizabeth Crow Abshire, 29, and 16-year old Violet Iantha Crow, together with their newlywed friend, 19-year old Etta Bean Daniels, were heading into town from a ranch on the east side of the river.

Newspaper accounts tout the bravery of a man called “Indian Dick,” the only eyewitness to the accident. He and some other Indians recovered the sisters' bodies the same day but did not locate Etta's until the following day. Wading in water up to their necks, one of the men nearly lost his own life, saved only by a rope thrown out to him.

Susie and Violet had been the Crow family's last living members. Their father died two months before their accident and their mother had died in 1891, the same year Susie married Farley Abshire. Two older sisters preceded them in death, one at the age of 26 and another at only 8 months.

Susie and Farley had three children, Francis Presley, Alfred Cecil and another who died in infancy.

Francis, their oldest, went on to become a California State Senator representing the 12th District from 1948 to 1958. He also served as a Sonoma County Deputy Assessor and was a member of the Geyserville School Board. He died in 1965 and is buried at Oak Mound in Healdsburg.

Here's what *Cloverdale Connect* readers have to say about the paper:

“Great local paper. Loved finding it in our mailbox today!”

“Love the paper. I've lived in Cloverdale for 53 years.”

“I just received and read my first issue! I love this little newspaper “


“Thank you so much for your hard work on the Cloverdale Connect newspaper! I enjoyed it very much!”

“Great newsletter, I really enjoyed reading it and doing the crossword puzzle”

“Thank you for creating this little paper”

“I got the first publication this week great job I love it.”


Timothy D. Fitzpatrick
Attorney at Law




- Business Law
- Wine Law
- Real Estate Law
- Estate Planning
- Trust Administration

AV PREEMINENT[®]
Peer Rated for Highest Level of Professional Excellence 2019

465 Healdsburg Avenue • Healdsburg, CA 95448
timfitz@sonic.net • 707.433.5297
www.timothyfitzpatricklaw.com



Curbside Pickup
Recoger desde la acera
ALL BRANCHES • TODAS LAS BIBLIOTECAS



sonomalibrary.org

Experience the Joy of Cloverdale Fairy Doors & Painted Rocks

Have you been walking around Cloverdale and you look down and see a little decorated door in a corner or a brightly painted rock left in a surprising place? That's the joy spread by the Cloverdale Fairy Door and Painted Rocks group. They find creative places and with permission, create little fairy door vignettes, creating joy for the discoverer. They also paint rocks and hide them around town bringing excitement to whoever finds them. If you find one of the rocks, be sure to look on the back to see what it says and of course, take a photo and post it on their Facebook page "Cloverdale Rocks & Fairies".

Local residents Marissa, Lynn, Debbie, Dennis and Linda encourage everyone to join the fun. They have clear guidelines for both the fairy doors and the painted rocks to keep people, birds and animals safe and remain good neighbors in our community. Why not join in the fun and paint a rock or create a door – you'll find all the information you need to participate on the Cloverdale Rocks & Fairies Facebook page.

Put on your mask, go outside, get some fresh air and take a stroll around Cloverdale. Use this Fairy Door map to guide you and see how many you can find. Each month we will feature a new door or rock – see if you can locate it in town. One of this month's photos is a colorful July 4th fairy door and rocks near Plank Coffee. Join in the fun and happy hunting!

Enter the *Cloverdale Connect* Front Page Photo Contest!

Submit your photograph for a chance to be featured on our Front Page in an upcoming issue. Submit your photos any time of the year.

Each month the *Cloverdale Connect* Front Page Photo Winner receives a FREE drink from **Rockin' A Adventure Café**, Email your photos to info@cloverdaleconnect.com or mail to P.O. Box 404 Cloverdale, CA 95425.



SUMMER SIDEWALK Sale

SATURDAY
AUG 22
10-3PM

SHOP LOCAL *and*
SHOP THE BEST DEALS
OF THE YEAR!

SAVE THE DATE

14feet

Bella Moda

Cloverdale Ace Hardware

Cloverdale Nursery

Cloverdale Pharmacy

Dahlia & Sage Community Market

Erin Mavis

Estate Retail Therapy

Heart City

Kelley & Young Tasting Room

Ko Studio Art

Next Door Comics

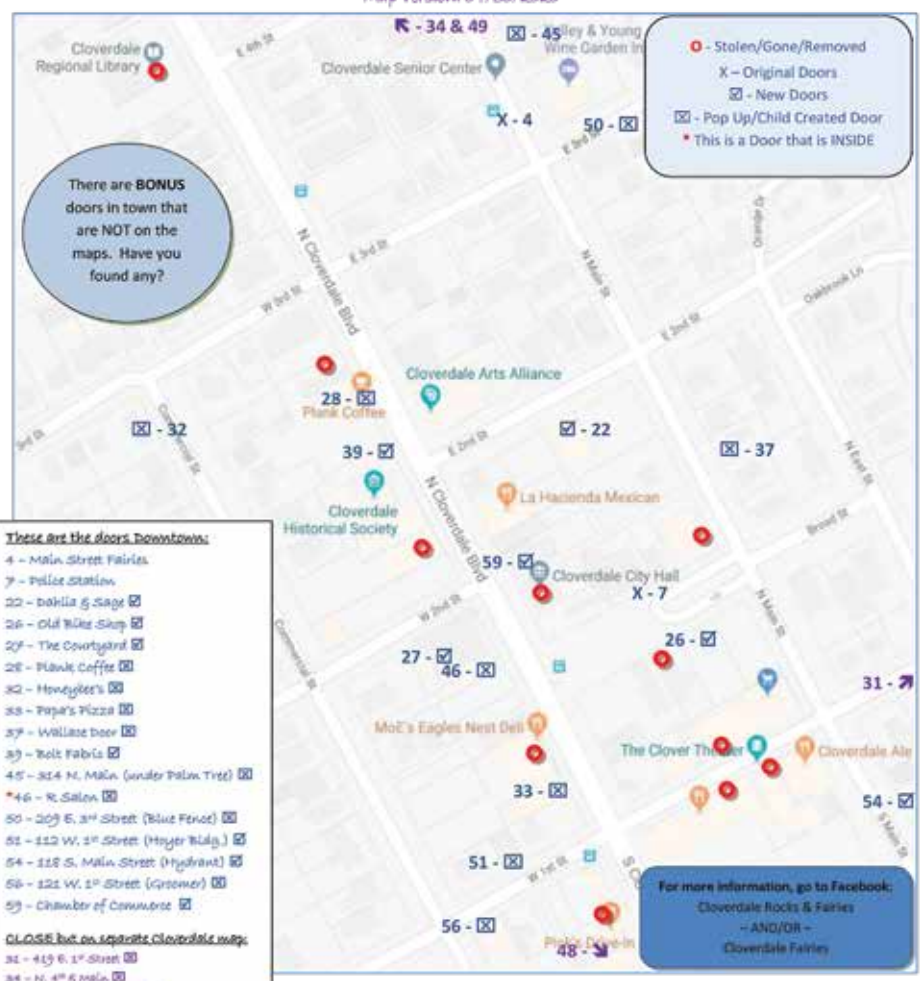
R Salon

The Outpost

VSV (formerly Voss Signature Vintage)

Main Street Fairy Door Map - Cloverdale, CA

We will update the map as more doors are spotted... Happy hunting!!!
Map Version: 04/30/2020



There are **BONUS** doors in town that are **NOT** on the maps. Have you found any?

These are the doors Downtown:

- 4 - Main Street Fairies
- 7 - Police Station
- 22 - Dahlia & Sage
- 26 - Old Water Shop
- 27 - The Courtyard
- 28 - Plank Coffee
- 30 - Honeybee's
- 38 - Papa's Pizza
- 39 - Wallace Beer
- 39 - Bolt Fabric
- 45 - 314 N. Main (under Palm Tree)
- *46 - R. Salvo
- 50 - 209 E. 3rd Street (Blue Fence)
- 51 - 112 W. 1st Street (Hoger Bldg.)
- 54 - 118 S. Main Street (Hydrant)
- 56 - 122 W. 1st Street (Greenery)
- 59 - Chamber of Commerce

CLOSE but on separate Cloverdale map:

- 32 - 419 E. 1st Street
- 34 - N. 4th Main
- 48 - Estate Retail Therapy
- 49 - 126 E. 4th St. (2 hrs)

For more information, go to Facebook:
- Cloverdale Rocks & Fairies
- AND/OR -
- Cloverdale Fairies

PLEASE DO NOT MOVE OR REMOVE THE FAIRY DOORS FROM THEIR EXISTING LOCATIONS.



2020 Oktoberfest Cancelled

Recently the Kiwanis Club of Cloverdale reluctantly made the decision to cancel the 2020 Oktoberfest scheduled for October 3rd. The Oktoberfest relies on sponsorships and donations and the Kiwanis club felt it would be difficult and insensitive to ask in this current economic situation.

Another concern pertained to physical distancing and group gathering restrictions. Putting on the Oktoberfest starts months ahead of the event with event marketing, planning and soliciting donations. Without knowing for sure what the health and gathering guidelines will be in a few months, the Kiwanis Club felt it couldn't afford to spend the funds necessary for a successful event without the assurance that it could actually take place as scheduled. The funds generated from Oktoberfest support the Kiwanis Club's administrative account and help the club meet their financial obligations.

Oktoberfest Chair, Laurie Kneeland stated "As chair of the Oktoberfest, I want to thank everyone who has supported this event through the years - especially our sponsors, vendors, volunteers and all of you who have made this event so successful."

Now, the Kiwanis Club of Cloverdale is looking forward to next year's Oktoberfest and Courtney's Pumpkin Patch, scheduled for Saturday, October 2nd, 2021. Mark your calendars! For more information, please contact Laurie Kneeland, at mailcentercloverdale@gmail.com

Advertise in *Cloverdale Connect*

Cloverdale Connect reaches over 5800 Cloverdale area households and businesses each month via direct mail with additional copies of the printed edition available at the Cloverdale Chamber of Commerce for a total of 6,000 printed copies.

All content is available online 24/7 www.cloverdaleconnect.com Follow us on our Facebook page Cloverdale Connect adsales@cloverdaleconnect.com 707.322.3403



EXPERIENCE THE DIFFERENCE!

At W Real Estate, our clients and their goals are our first priority, without compromise. Whether you are needing to buy or sell locally, nationally or internationally, our network is far reaching, and we strive to ensure that each and every client is completely satisfied.

This is our commitment to you and our community. We are proud to be a part of the Bay Area, and we know it like no other – the people, the locations, what sets them apart. This is what sets us apart.

All of us here at Cloverdale's W Real Estate office are continuing to work hard for all of our clients during COVID 19, please feel free to call on our agents as we continually strive to meet your housing needs. If you need to speak to an agent, here is a list of their names and #'s:

Tedi Spain 707-292-3060

Maria Kenney 707-696-2258

Elsie Richardson 707-490-2545

Michael Laird 707-206-5606

Elissa Morrash 707-694-8821

Debbie Delfino 707-483-2121

Russ Klein 408-621-0776

114 Lake Street, Cloverdale, CA 95425

707-669-2444 • DRE #01795950

CELEBRATIONS OF LIFE

Birthdays, Weddings, Birth Announcements, Anniversaries, Retirements, Memorials

\$125 each - 100 words + photo in print edition and 500 words + photo online at cloverdaleconnect.com



Birthdays can be so much fun and even better when you share. Celebrate with an announcement in **Cloverdale Connect**, tell your friends and family – maybe you'll get lots of presents!

Birthdays can be so much fun and even better when you share. Celebrate with an announcement in **Cloverdale Connect**, tell your friends and family – maybe you'll get lots of presents! Birthdays can be so much fun and even better when you share. Celebrate with an announcement in **Cloverdale Connect**, tell your friends and family – maybe you'll get lots of presents!

Place a birthday announcement here in **Cloverdale Connect** next month.



Celebrate your wedding and share your good news. Tell family, friends, and neighbors about your special day. During this time of COVID-19 and limited gatherings it's even more important to share your wedding announcement with the community in **Cloverdale Connect**.

Celebrate your wedding and share your good news. Tell family, friends, and neighbors about your special day. During this time of COVID-19 and limited gatherings it's even more important to share your wedding announcement with the community in **Cloverdale Connect**.

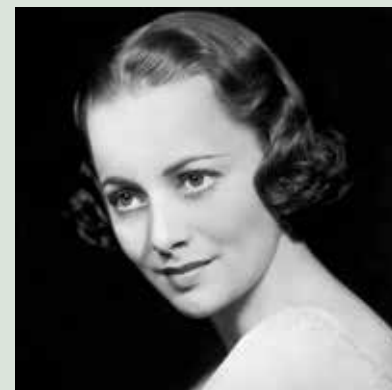
Celebrate your wedding and share your good news. Tell family, friends, and neighbors about your special day in **Cloverdale Connect**.



New Baby? You love your new baby and want to share the news. Tell the community about your new bundle of joy in **Cloverdale Connect**. Whether you are a proud parent, grandparent, aunt or uncle, be sure to share your delight.

New Baby? You love your new baby no matter what it looks like. Tell the community about your new bundle of joy in **Cloverdale Connect**. Whether you are a proud parent, grandparent, aunt or uncle, be sure to share your delight.

Tell the community about your new bundle of joy with a birth announcement in **Cloverdale Connect**.



Best known as Melanie in 'Gone with the Wind,' actress Olivia de Havilland won Academy Awards for her roles in 'To Each His Own' and 'The Heiress.'

Olivia de Havilland signed with Warner Brothers in 1935 and in 1939 appeared as Melanie in Gone with the Wind. The role gained her recognition and she went on to win Academy Awards for the films To Each His Own and The Heiress.

Born on July 1, 1916, in Tokyo, Japan, de Havilland spent much of her youth in California. She moved there with her mother and younger sister, Joan, after her parents divorced.

Memorialize your loved one in **Cloverdale Connect**.

